

Section 10.1

DW-2016 C3D Template.dwt

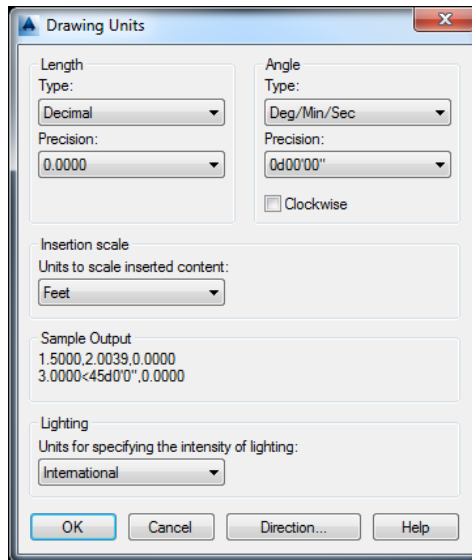
OVERVIEW - SECTION 10.1

This template is a Civil 3D template containing DW Engineering sections' title blocks for Design Drafting, Distribution, and Survey. Each title block is linked to a Sheet Set Manager [see [Section 7.0 – Sheet Set Manager](#)] and shall be used for all Civil work [see [Section 5.0 – Example Sheets](#)].

THIS PAGE INTENTIONALLY LEFT BLANK

DRAWING UNITS

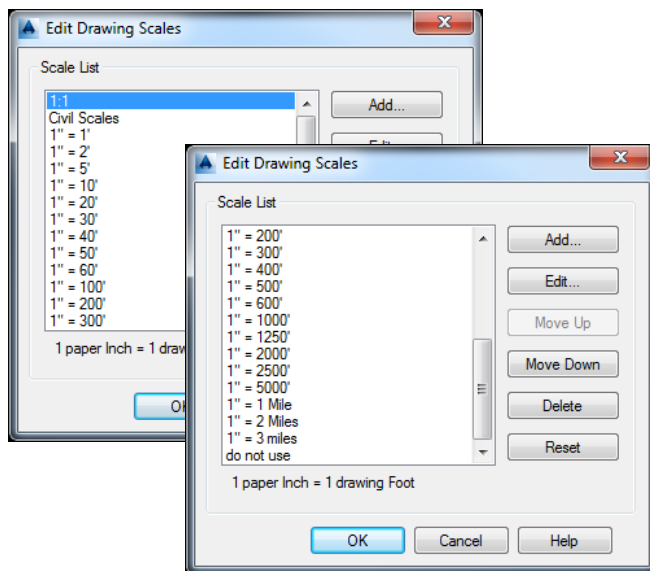
In this template the drawing units have been set to “Decimal – Feet”:



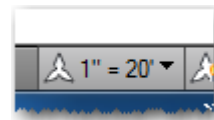
NOTE: The drawing units should not be changed for architecturally based drawings, use the “AEC” template for this purpose [see [Section 10.2 – DW-2016 AEC Template.dwt](#)].

DRAWING SCALES

Only the acceptable drawings scales [see [Section 13.1 – Model/Paper Space & Annotation Scales](#)] have been added to this template:



The default drawing scale 1" = 20':



NOTE: Model Space does NOT have a Coordinate System predefined.

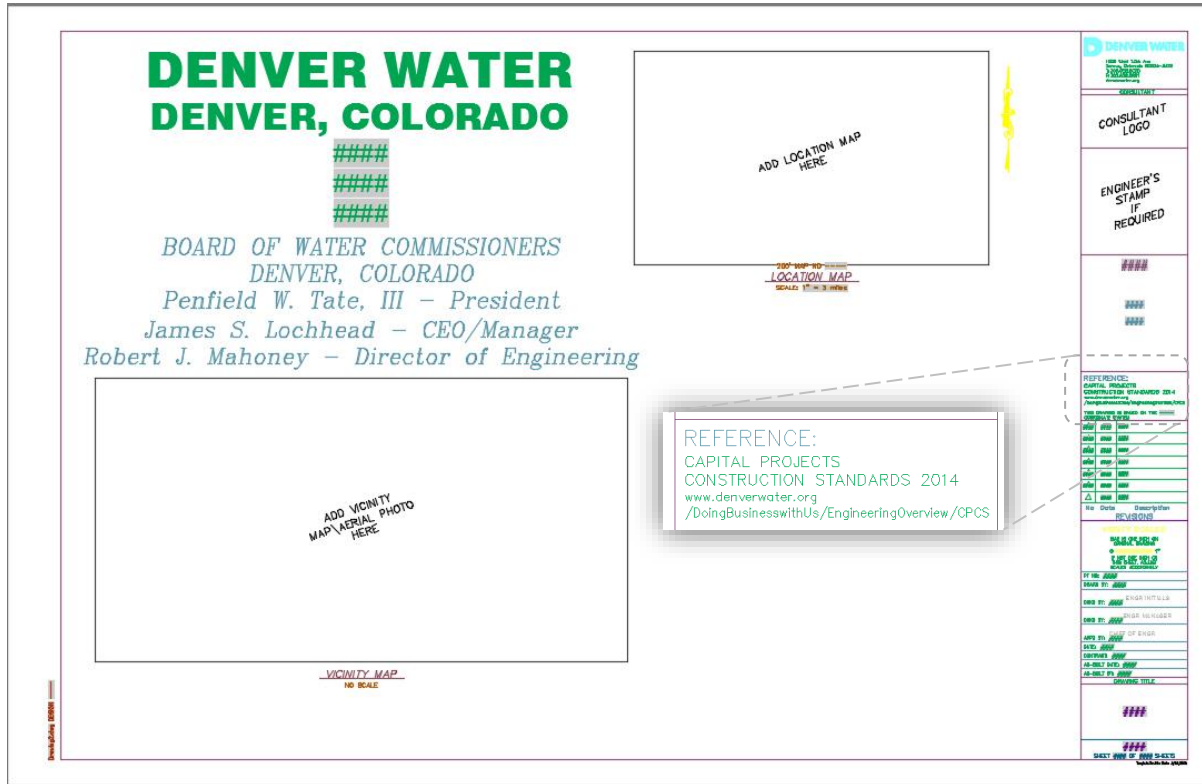
LAYOUT TABS

This template has four predefined layout tabs (Paper Space) that contain title blocks for Design Drafting, Distribution, and Survey:



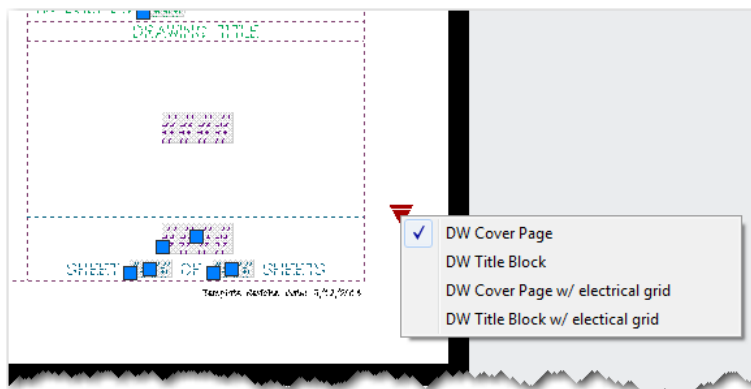
DESIGN LAYOUT TAB

The DESIGN layout tab is for use with Design Drafting/Capital Project work; the Title Block references the Capital Projects Construction Standards (CPCS) 3rd edition:



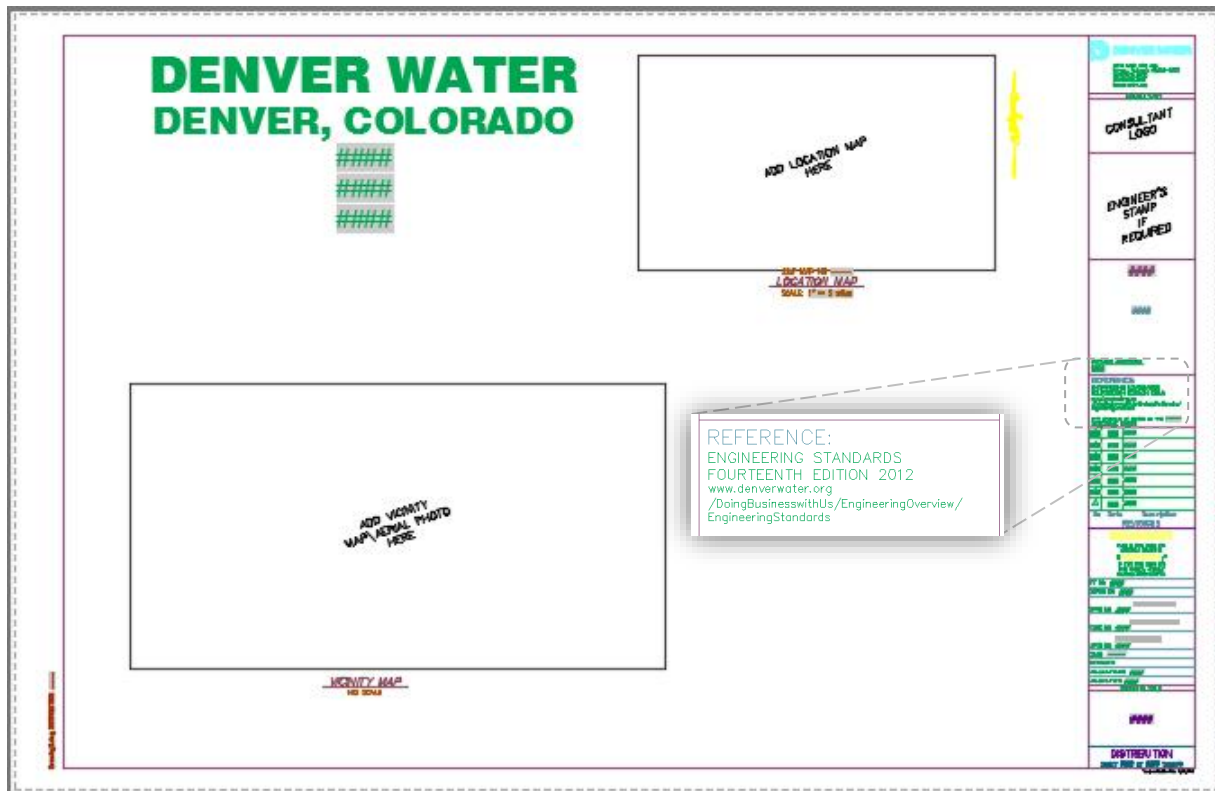
NOTE: Viewports are placed for general guidance and can be modified and deleted as needed.

The sheet size is set to 22x34 and defaulted to the Cover Sheet information. In the lower right corner of the DW_DSGN Title Block, select the Dynamic grip for Visibility States and choose the appropriate Title Block type:



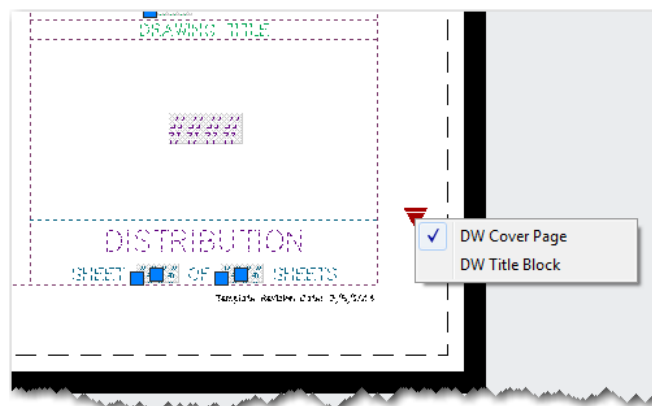
DISTRIBUTION LAYOUT TAB

The DISTRIBUTION layout tab is for use with Distribution work; the Title Block references the Engineering Standards 14th Edition 2012:



NOTE: Viewports are placed for general guidance and can be modified and deleted as needed.

The sheet size is set to 22x34 and defaulted to the Cover Sheet information. In the lower right corner of the DW_DIST Title Block select the Dynamic grip for Visibility States  and choose the appropriate Title Block type:



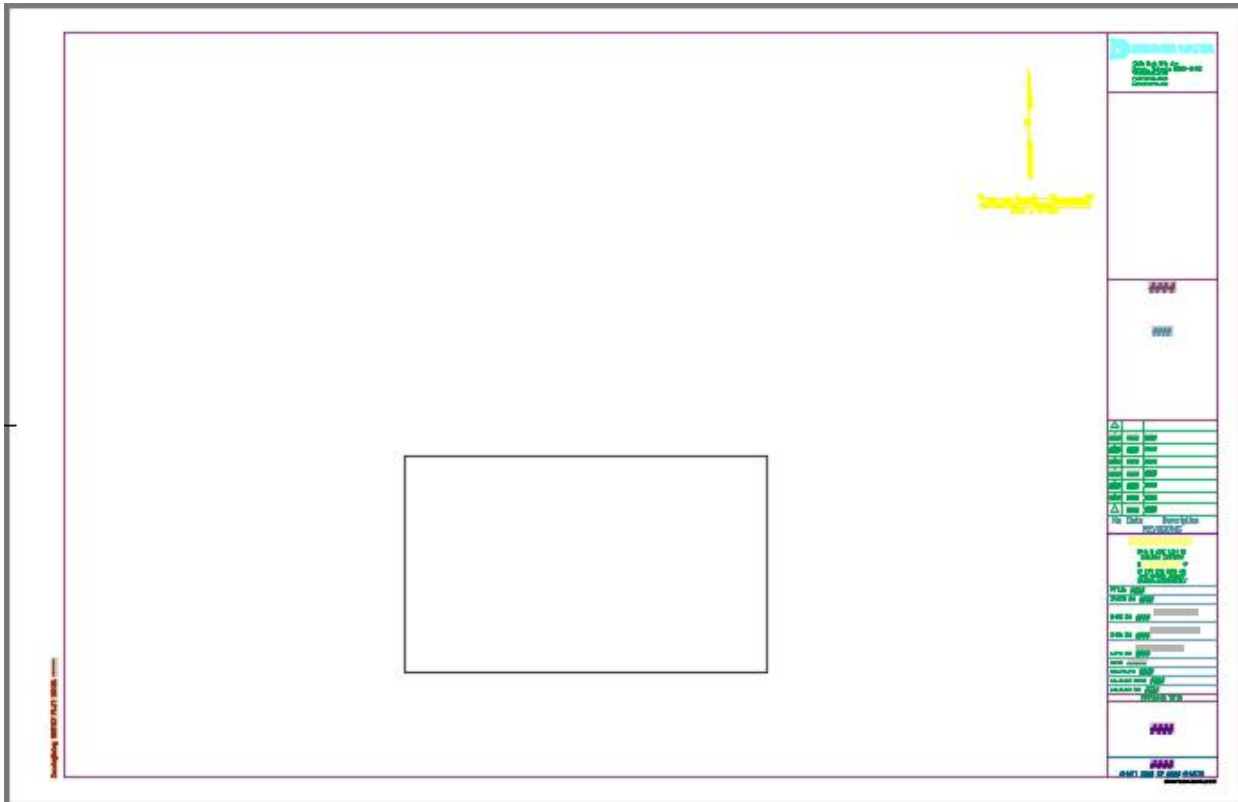
SURVEY PLAT 18x24 LAYOUT TAB

The Survey Plat 18x24 layout tab is for use for Survey for 18" x 24" Plats:



SURVEY PLAT 22x34 LAYOUT TAB

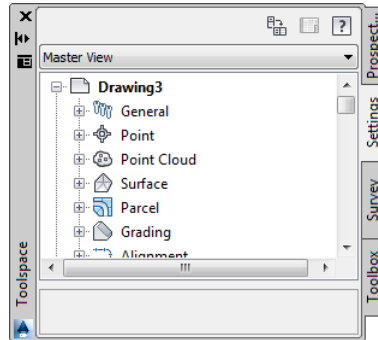
The Survey Plat 22x34 layout tab is for use for Survey for 22" x 34" Plats:



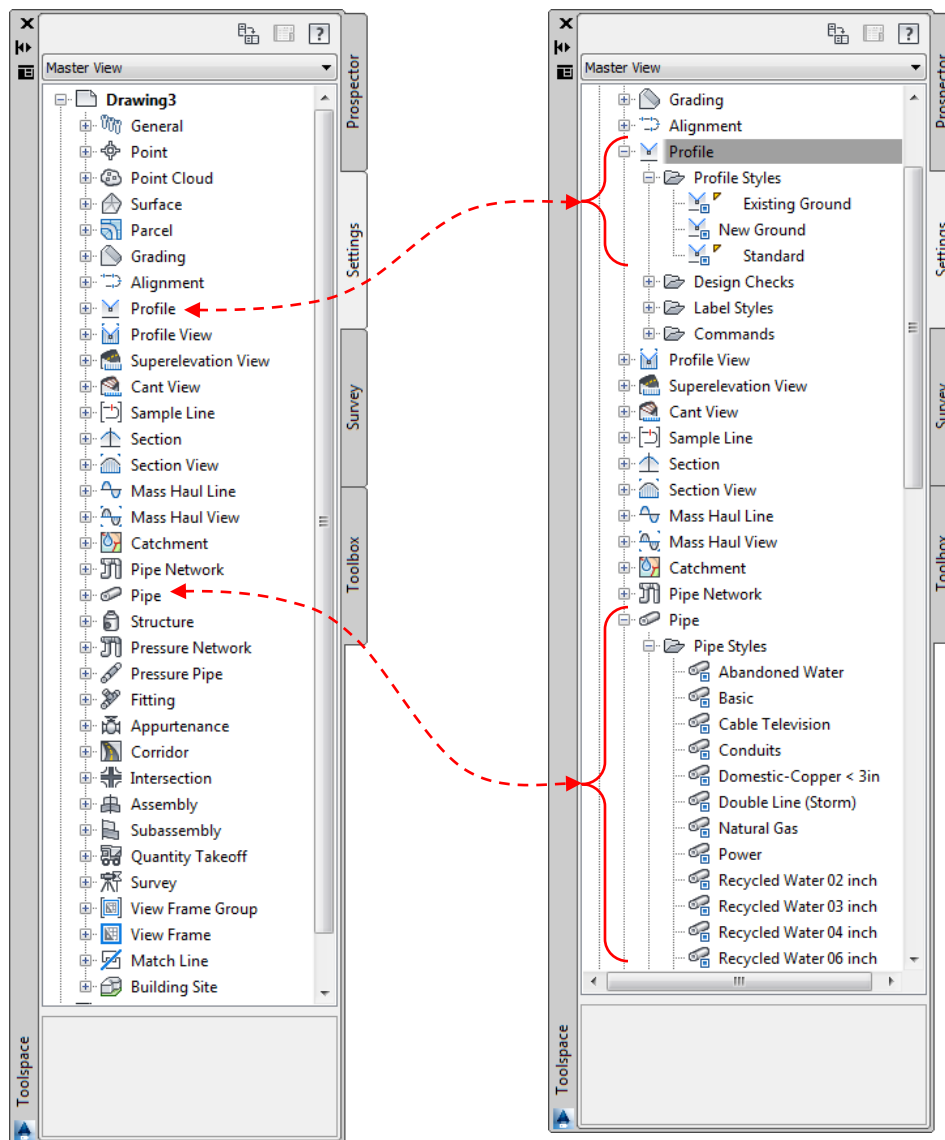
C3D OBJECTS AND STYLES

Embedded within the template are customized C3D Objects and Styles that allow for standardized plan creation across DW's Engineering Division. Each section within Engineering (Design Drafting, Distribution, and Survey) will use these styles in slightly different manners. However, the basic standardization is the same for all styles, utilizing DW's standard layers, text styles, and symbols.

Navigate to the *Toolspace* palette and select the *Settings* tab to view all of the available customized C3D styles:



By expanding a category each customized style can be seen. In this example the Profile/Profile Styles and Pipe/Pipe Styles categories have been expanded showing some of the available styles:



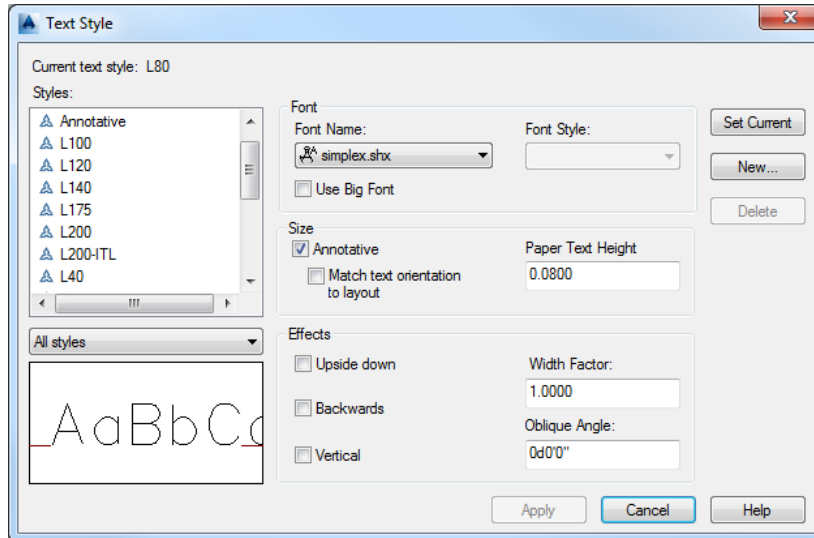
ANNOTATION

Every sheet within a plan set requires a certain level of labeling and annotation. Contained within this template are the standard styles for use with Civil based projects, see [Section 13.0 – Labeling and Annotation](#) for a full explanation of the *Annotate* tab located on the Ribbon.

NOTE: All customized annotation styles (text styles, dim styles, etc.) have been created to be “annotative”, meaning they will scale up and down automatically based on the Drawing Scale.

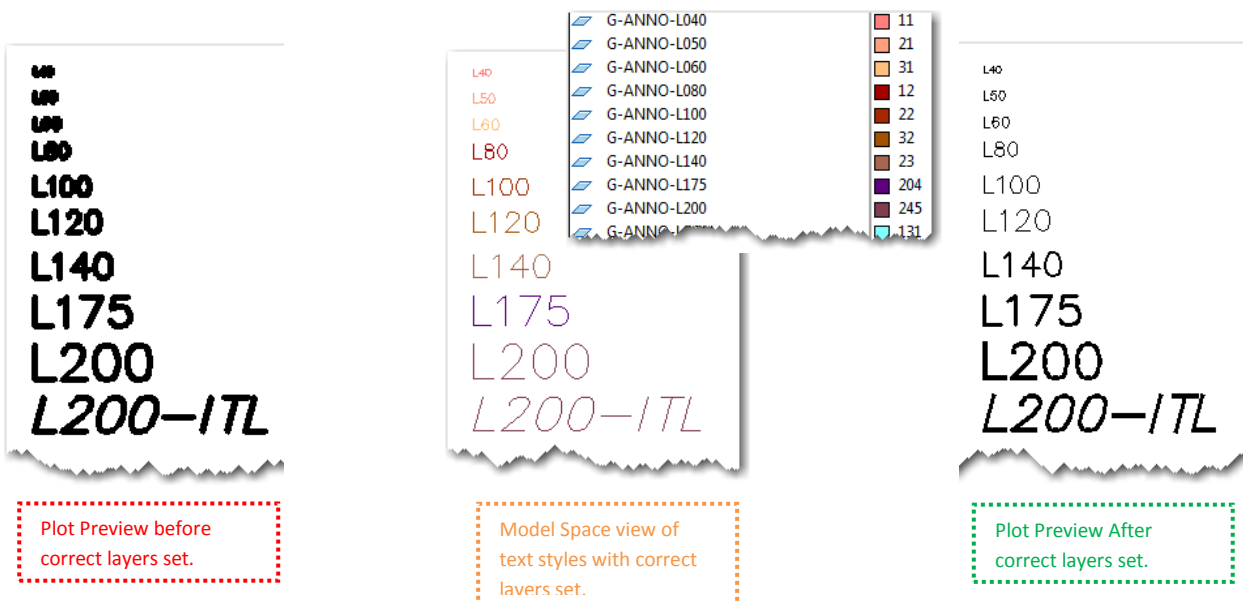
TEXT STYLES

DW’s custom text styles are consistent throughout all of DW’s templates, most text styles are based on a “simplex” font style:



NOTE: When the Text Styles are used properly the settings above should never need to be modified.

For plotting purposes, always place text on a Layer that indicates which text style was used:

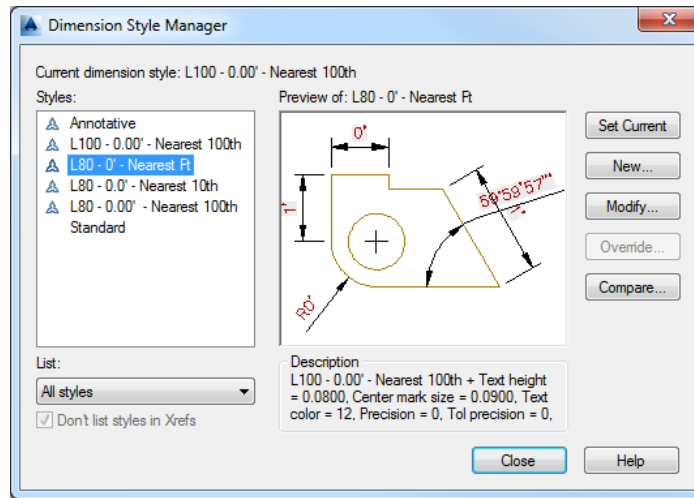


NOTE: Each Discipline Designator has a specific set of “text” layers.

DIMENSION STYLES

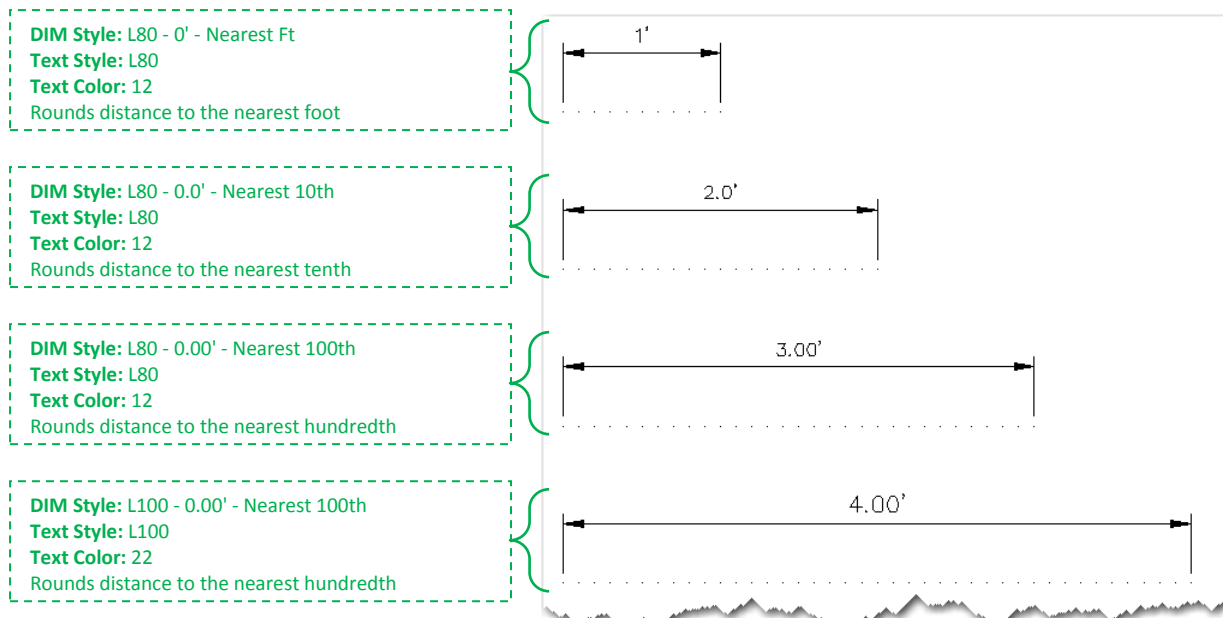
DW's custom Dimension (Dim) Styles have been created to reference the corresponding Text Styles. All Dim Styles are based on a "simplex" font style, and text should be located above the line.

The Dim Styles located in this template are for Civil based work only:

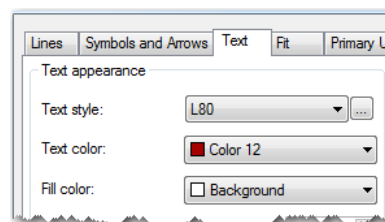
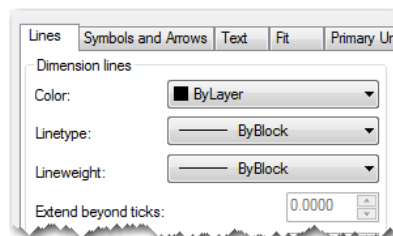


NOTE: When the Dim Styles are used properly the settings above should never need to be modified.

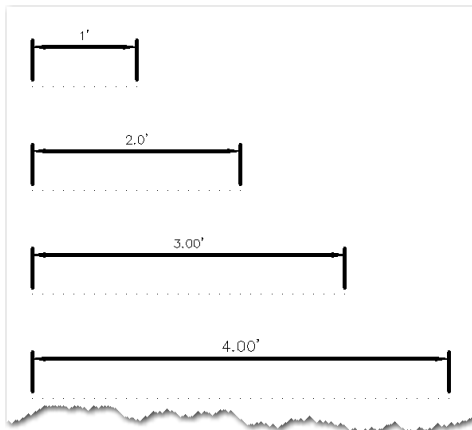
Below is a quick visual of how each Dim Style should appear:



Each Dim Style has been modified so that the lines are ByLayer/ByBlock, and text is set to plot at a "Pen 2" width [see [Section 16.0 – Plot Styles \(CTBs\)](#)]:



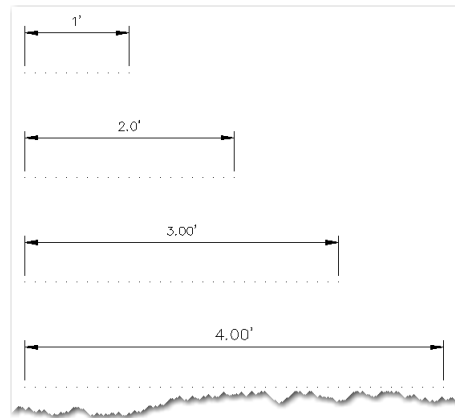
For plotting purposes, always place dimensions on the appropriate "DIMS" Layer:



Plot Preview before
correct layers set.

- A-ANNO-DIMS
- C-ANNO-DIMS
- E-ANNO-DIMS
- EI-ANNO-DIMS
- G-ANNO-DIMS
- L-ANNO-DIMS
- M-ANNO-DIMS
- S-ANNO-DIMS
- V-ANNO-DIMS

Layer choices per
Discipline Designator



Plot Preview After
correct layers set.