

## Section 10.3

# DW-PMGT 2016 C3D Template.dwt

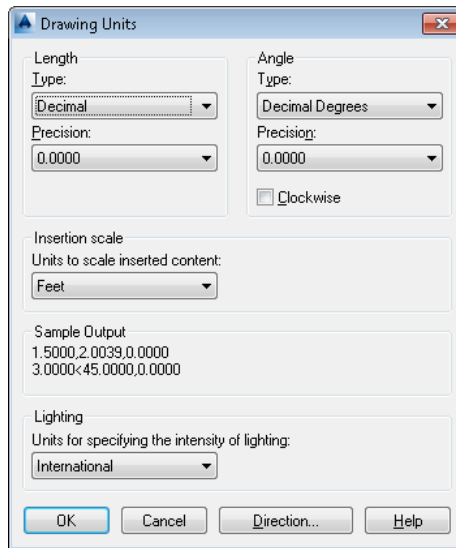
### OVERVIEW - SECTION 10.3

This template is a Civil 3D template and shall be used to create Property Management specific drawings and/or exhibits; title blocks are not linked to Sheet Sets. See [Section 5.4 – Property Management Example Sheets](#) for a full explanation of Property Management drawings.

THIS PAGE INTENTIONALLY LEFT BLANK

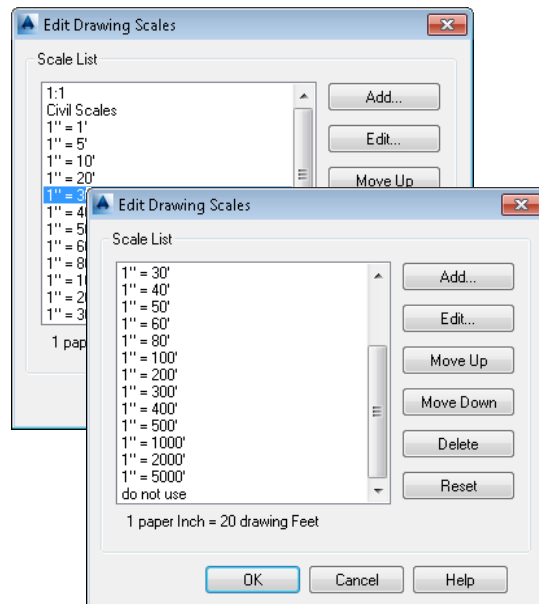
## DRAWING UNITS

In this template the drawing units have been set to “Decimal – Feet”:

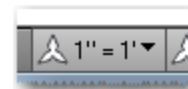


## DRAWING SCALES

Only the acceptable drawings scales [see [Section 4.1 – Model/Paper Space and Annotation Scales](#)] have been added to this template;



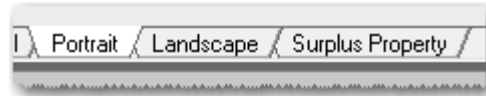
The default drawing scale 1" = 1':



**NOTE:** Model Space does NOT have a Coordinate System predefined.

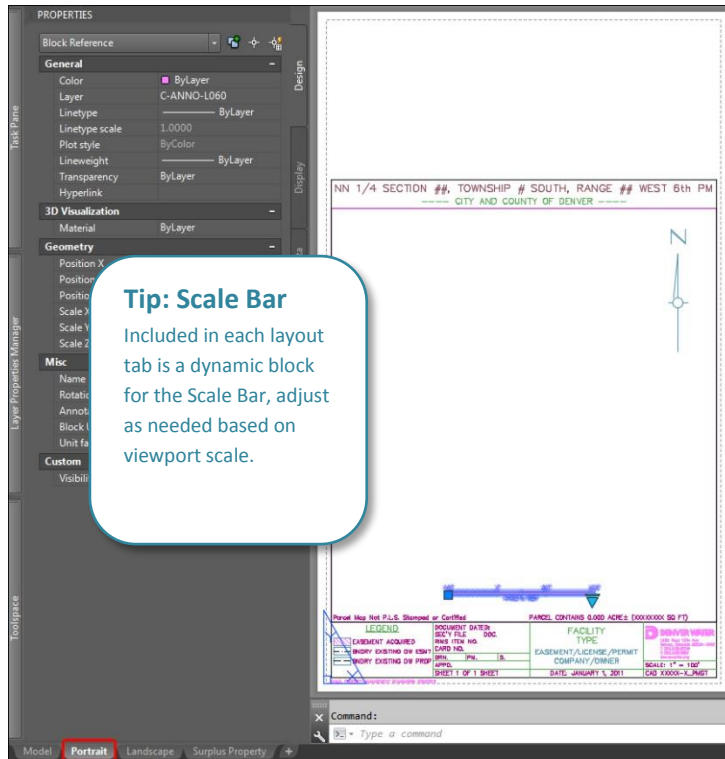
## LAYOUT TABS

This template has three predefined layout tabs (Paper Space) that contain attributed title blocks:



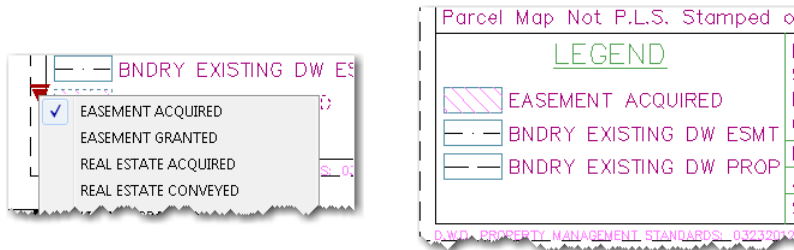
### PORTRAIT LAYOUT TAB

The Portrait layout tab contains an 8.5x11 vertical title block, on a "legal" sized sheet:



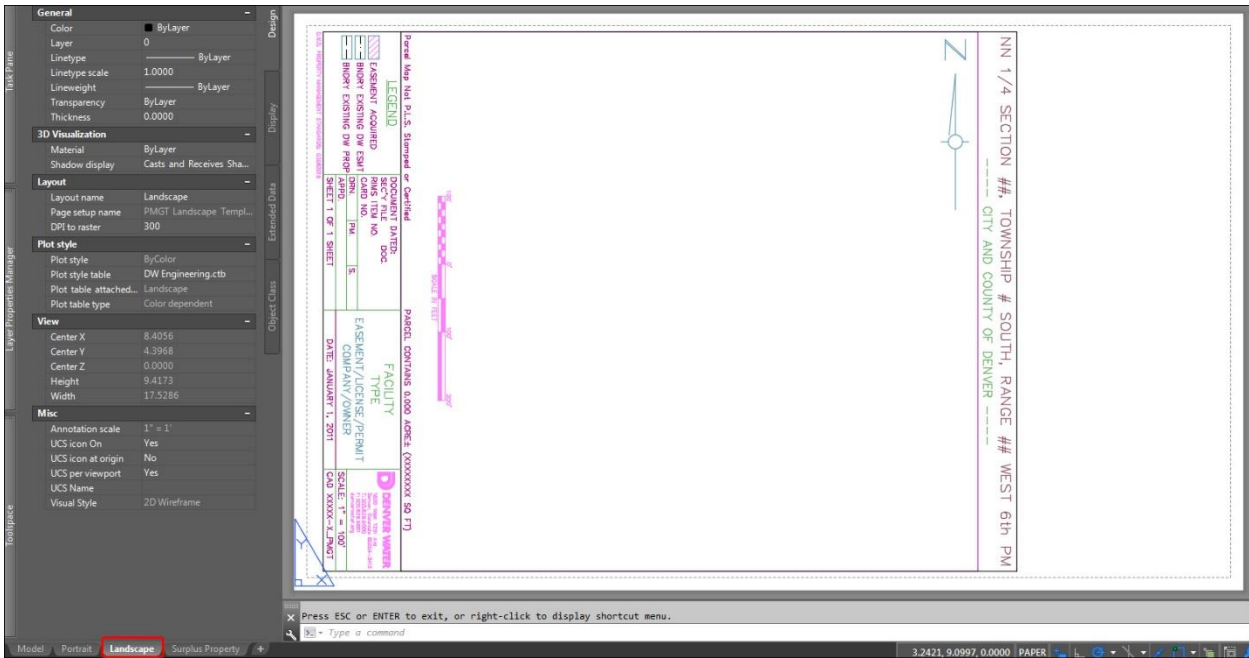
**NOTE: DO NOT change Text Styles in the title block.**

The hatch patterns and linetypes in the Legend are dynamic blocks; use the appropriate visibility state as needed for each:



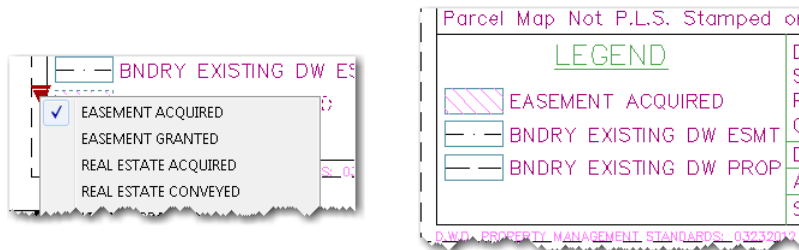
# LANDSCAPE LAYOUT TAB

The Landscape layout tab contains an 8.5x11 horizontal title block, on a “legal” sized sheet:



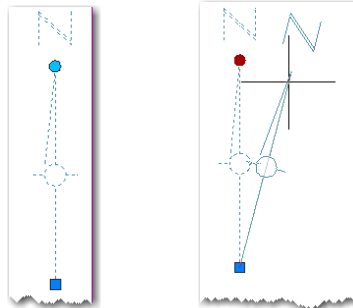
**NOTE: DO NOT change Text Styles in the title block.**

The hatch patterns and linetypes in the Legend are dynamic blocks; use the appropriate visibility state as needed for each:



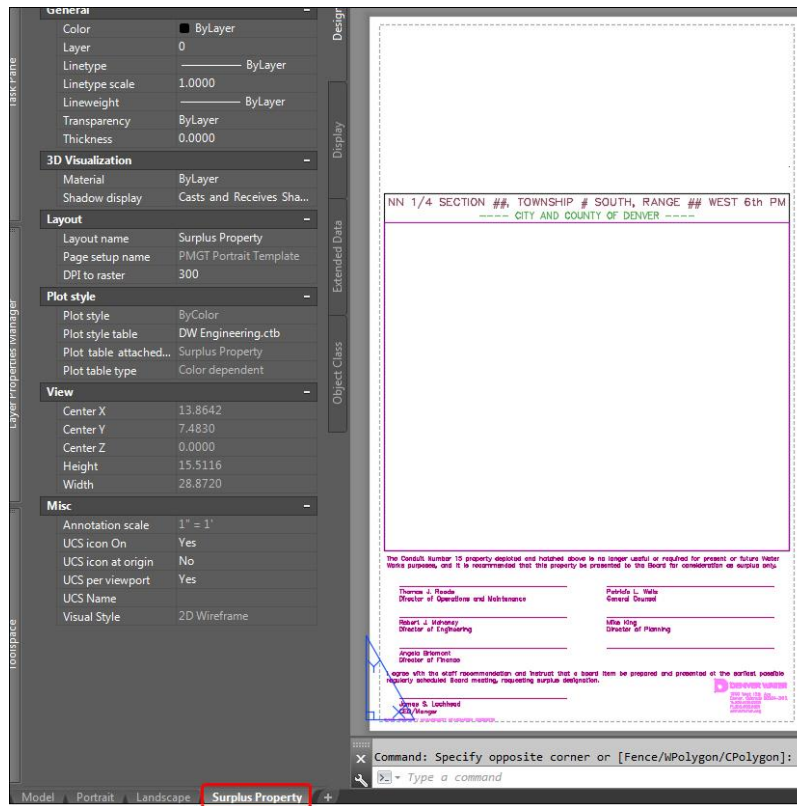
### Tip: North Arrow

The North Arrow included in the layout tabs contains a rotate parameter, indicated by the round blue grip:



## SURPLUS PROPERTY LAYOUT TAB

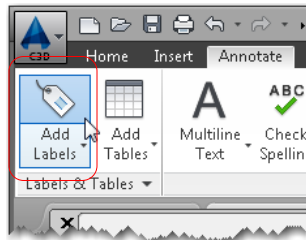
The Surplus Property layout tab contains the exhibit sheet for legal documentation:



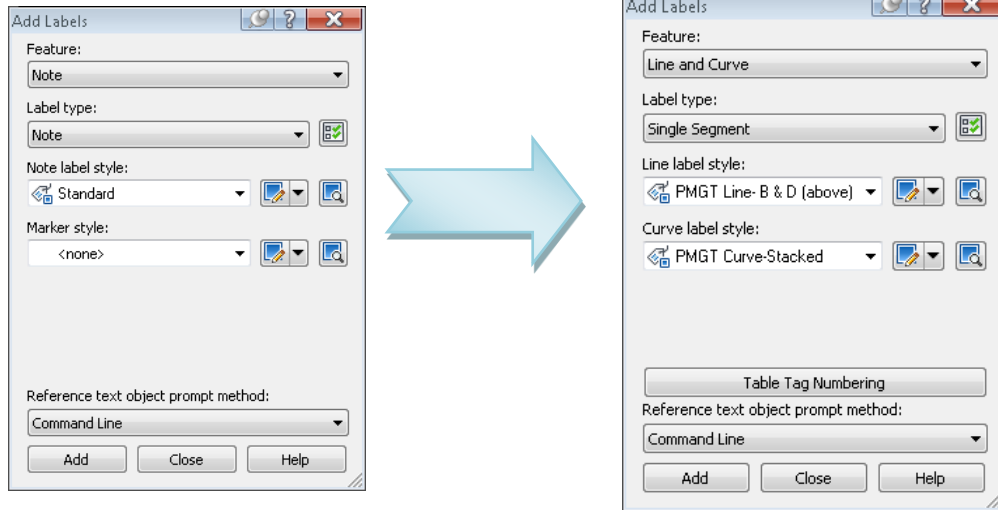
## LABELING WITH C3D STYLES

Embedded within the template are customized C3D Label Styles that allow for standardized plan creation. These C3D styles are annotative and contain the proper DW standard layers and text styles.

To utilize the appropriate Label styles click on the *Annotate* tab on the Ribbon and select the tag Icon just above the Add Labels pull-down:



The *Add Labels* pop-up window will appear. Specific label styles for Property Management are prefixed with PMGT; by choosing the desired Feature type (such as *Line and Curve*) the PMGT C3D label styles will be available for use:



THIS PAGE INTENTIONALLY LEFT BLANK