

## Section 10.4

# DW-2016 Details\_CPCS\_EngStds.dwt

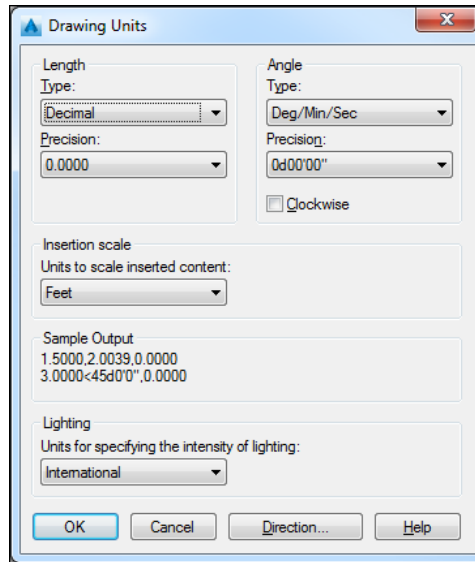
### OVERVIEW - SECTION 10.4

This template shall be used to create detail drawings for DW Engineering Standards and the Capital Projects Construction Standards (CPCS) (Architectural, Mechanical, Structural, and Electrical); this template is not a C3D drawing, therefore it does not contain any custom C3D styles. This template is primarily used for Distribution and Capital Projects.

THIS PAGE INTENTIONALLY LEFT BLANK

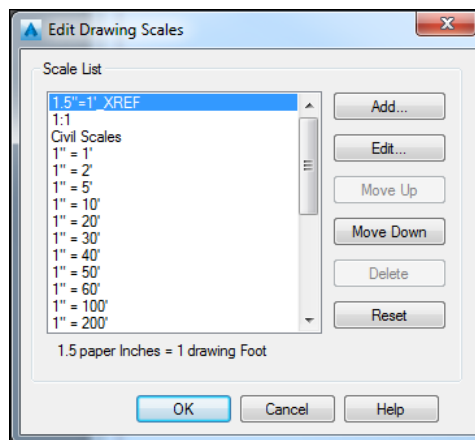
## DRAWING UNITS

In this template the drawing units have been set to “Decimal – Feet”:



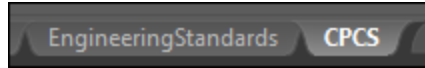
## DRAWING SCALES

Only the acceptable drawings scales [see [Section 4.1 – Model/Paper Space and Annotation Scales](#)] have been added to this template.



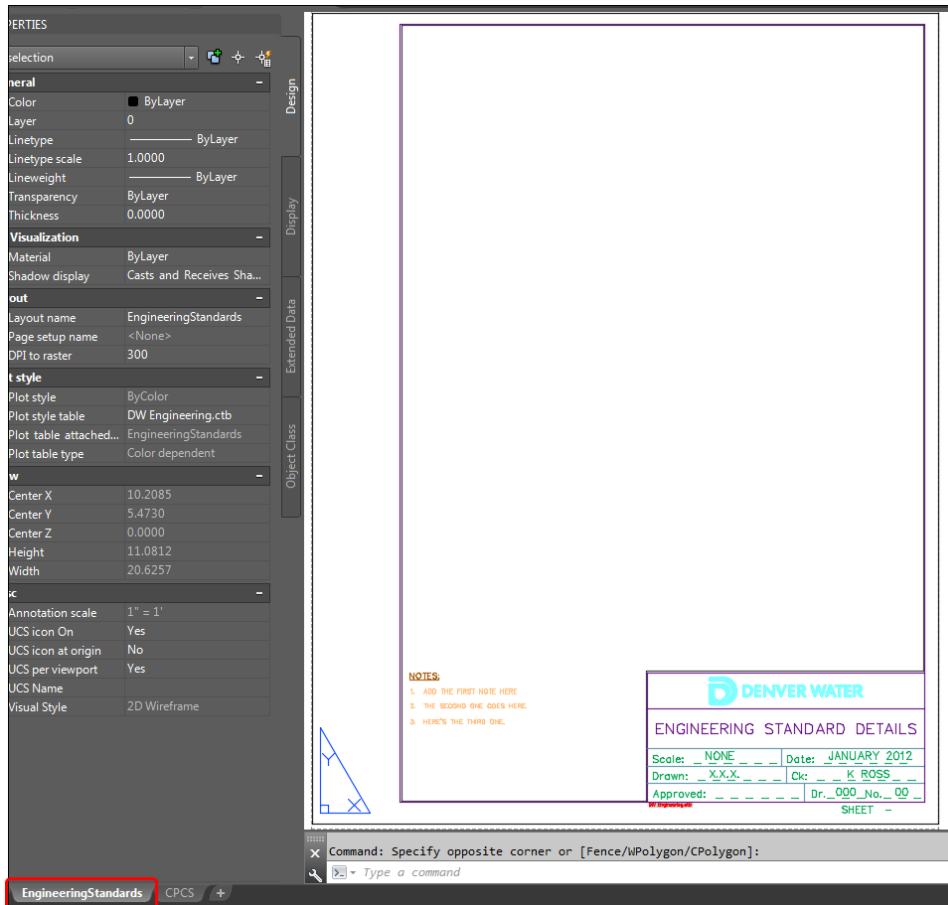
## LAYOUT TABS

This template has two predefined layout tabs (Paper Space) that contains the title block for details for Engineering or CPCS:




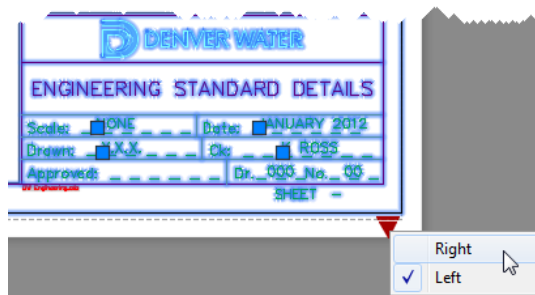
## ENGINEERING LAYOUT TAB

The ENGINEERING layout tab references the Engineering Standards Engineering Standards 14th Edition 2012:



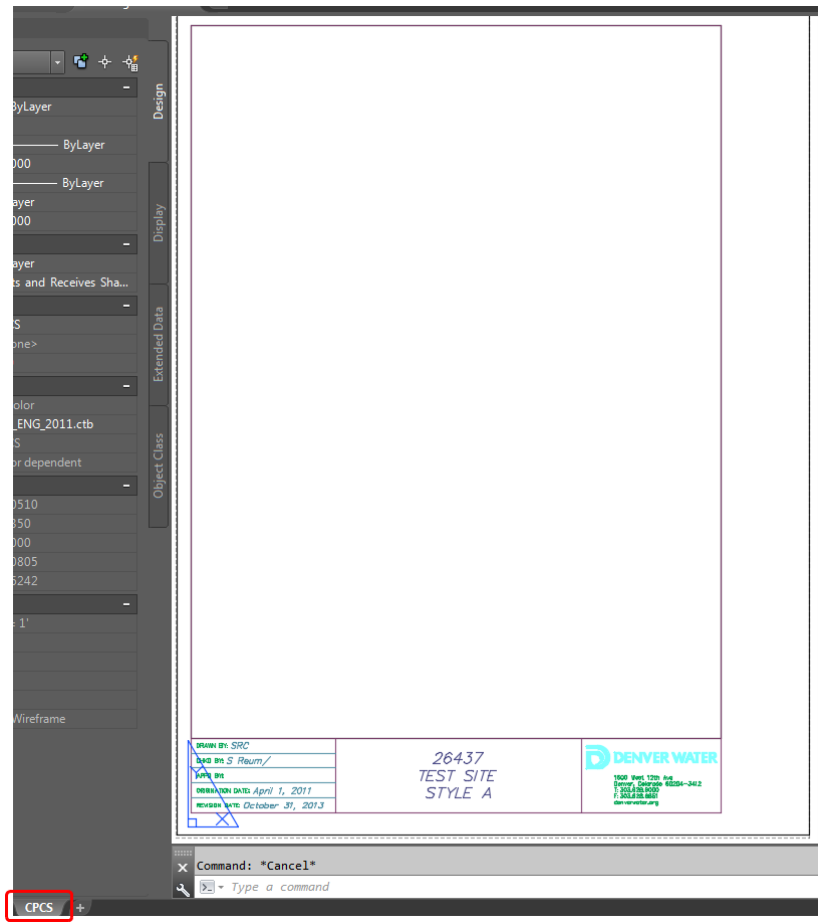
**NOTE:** Viewports are placed for general guidance and can be modified and deleted as needed.

In the lower right corner of the DW\_ENG\_STD\_TB select the Dynamic grip for Visibility States  and choose the appropriate Title Block type:




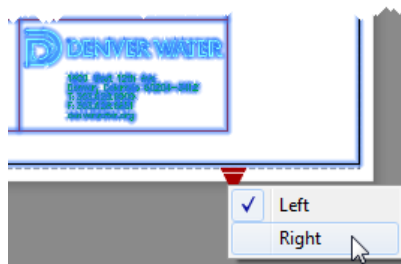
## CPCS LAYOUT TAB

The CPCS layout tab references the Capital Projects Construction Standards 2<sup>rd</sup> Edition 2014:



**NOTE:** Viewports are placed for general guidance and can be modified and deleted as needed.

In the lower right corner of the DW\_CSPS\_TB select the Dynamic grip for Visibility States  and choose the appropriate Title Block type:



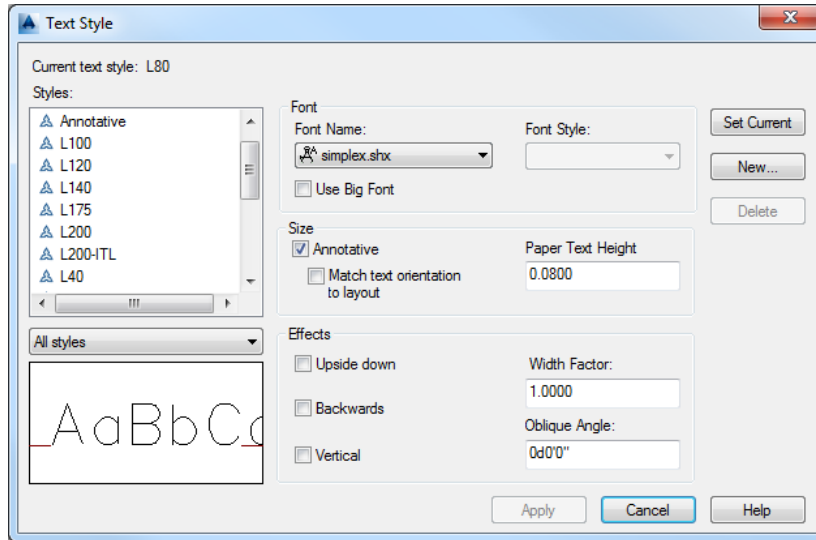
## ANNOTATION

Every sheet within a plan set requires a certain level of labeling and annotation. Contained within this template are the standard styles for use with Civil based projects, see [Section 13.0 – Labeling and Annotation](#) for a full explanation of the *Annotate* tab located on the Ribbon.

**NOTE:** All customized annotation styles (text styles, dim styles, etc.) have been created to be “annotative”, meaning they will scale up and down automatically based on the Drawing Scale.

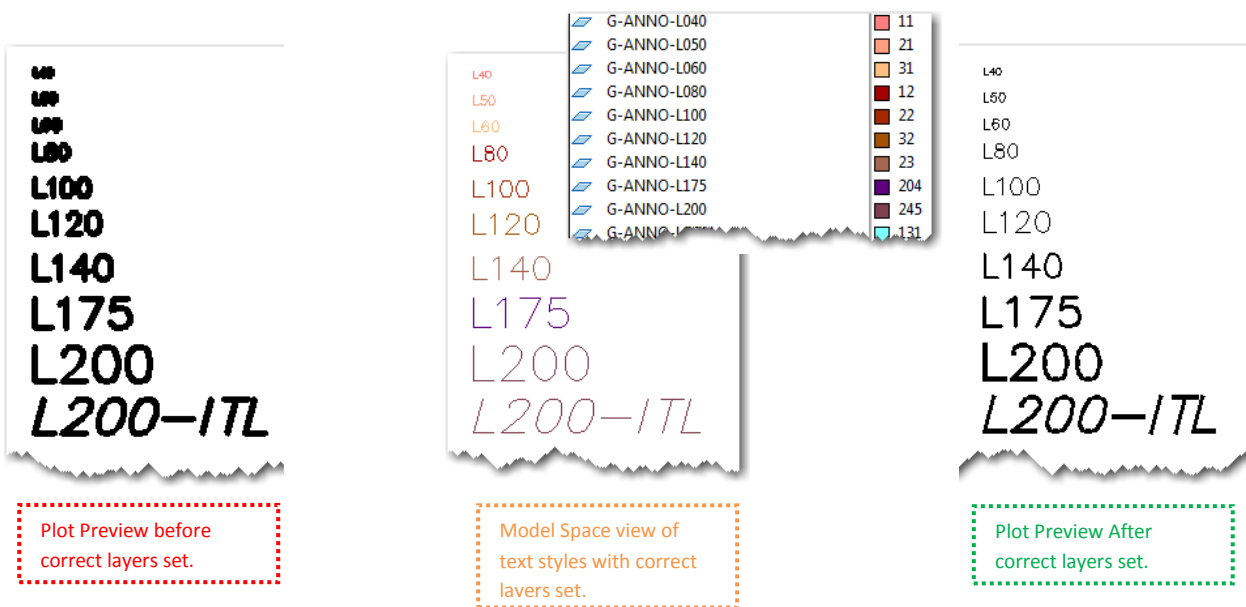
## TEXT STYLES

DW’s custom text styles are consistent throughout all of DW’s templates, most text styles are based on a “simplex” font style:



**NOTE:** When the Text Styles are used properly the settings above should never need to be modified.

For plotting purposes, always place text on a Layer that indicates which text style was used:

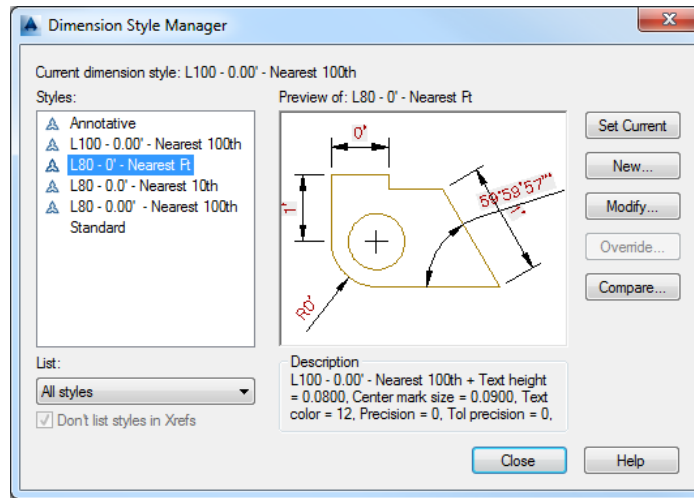


**NOTE:** Each Discipline Designator has a specific set of “text” layers.

## DIMENSION STYLES

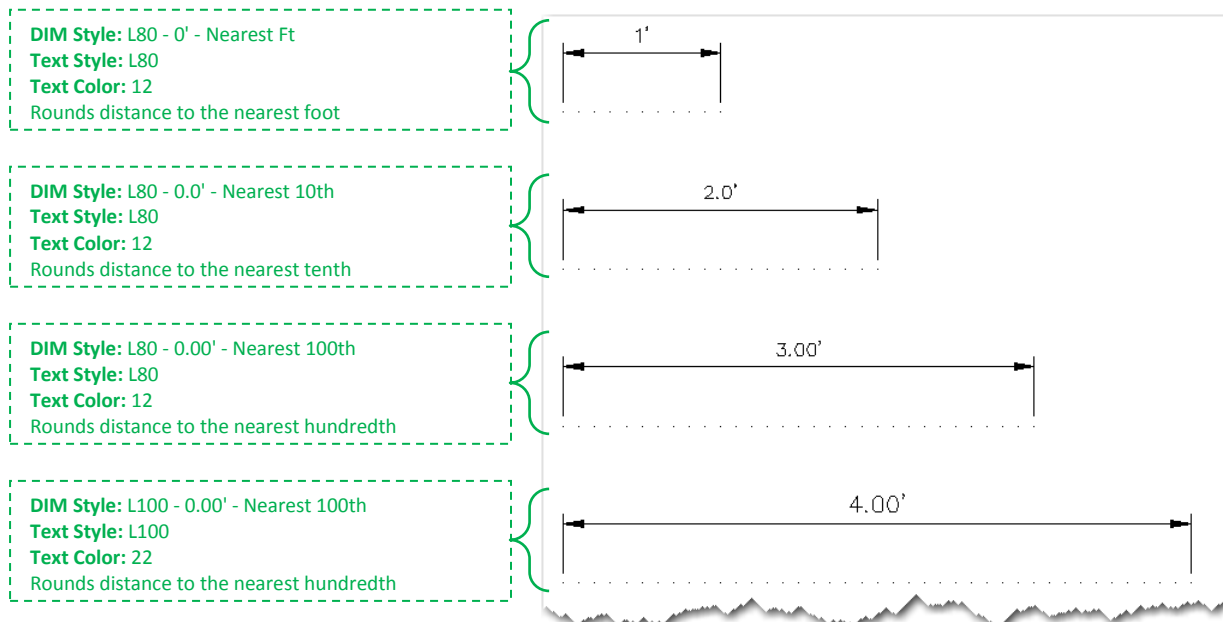
DW's custom Dimension (Dim) Styles have been created to reference the corresponding Text Styles. All Dim Styles are based on a "simplex" font style, and text should be located above the line.

The Dim Styles located in this template are for Civil based work only:

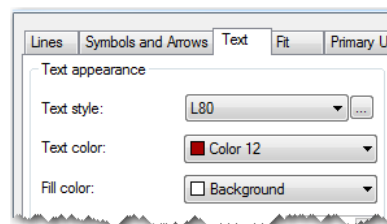
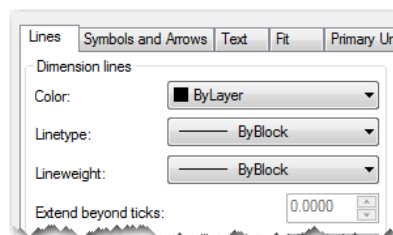


**NOTE:** When the Dim Styles are used properly the settings above should never need to be modified.

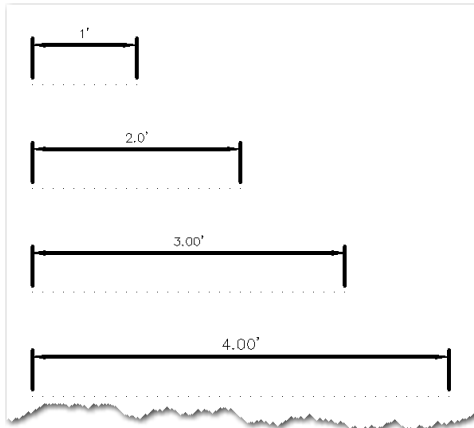
Below is a quick visual of how each Dim Style should appear:



Each Dim Style has been modified so that the lines are ByLayer/ByBlock, and text is set to plot at a "Pen 2" width [see [Section 16.1 – Plot Styles \(CTBs\)](#) Charts]:



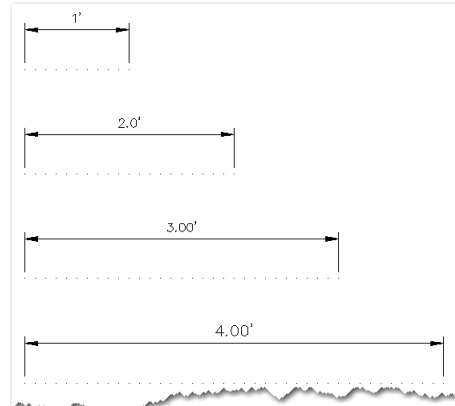
For plotting purposes, always place dimensions on the appropriate "DIMS" Layer:



Plot Preview before correct layers set.

- A-ANNO-DIMS
- C-ANNO-DIMS
- E-ANNO-DIMS
- EI-ANNO-DIMS
- G-ANNO-DIMS
- L-ANNO-DIMS
- M-ANNO-DIMS
- S-ANNO-DIMS
- V-ANNO-DIMS

Layer choices per Discipline Designator



Plot Preview After correct layers set.