

Coordinate Systems

TABLE OF CONTENTS: SECTION 11.0

Overview - Section 11.0.....	11.0-3
Setting a Coordinate System (<i>internal use only</i>).....	11.0-3
Setting a Coordinate System in Sheet Set Properties	11.0-3
Resetting Coordinate Systems.....	11.0-6

THIS PAGE INTENTIONALLY LEFT BLANK

OVERVIEW - SECTION 11.0

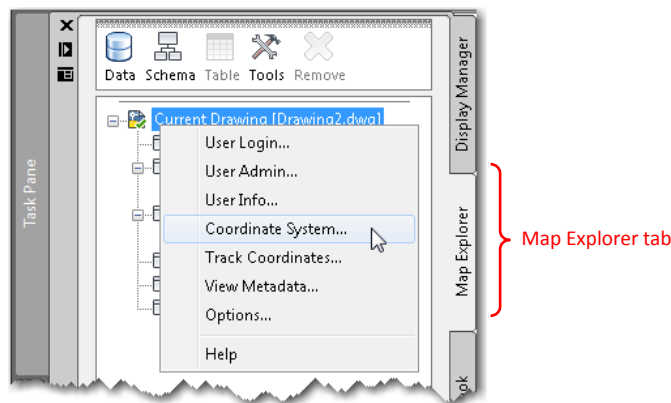
Civil based drawings will have a Coordinate System applied to it. DW Templates DO NOT have a preset Coordinate System, **this must be done by the drafter before anything is drawn in Model Space.**

Internally, DW has several custom Coordinate Systems covering various regions across Colorado; these Coordinate Systems will be used with the majority of projects.

It is NOT recommended to share empty drawings containing only a defined Coordinate System with Consultants or outside entities. It is difficult, if not impossible, to determine if the data placed in Model Space is geographically accurate.

SETTING A COORDINATE SYSTEM (INTERNAL USE)

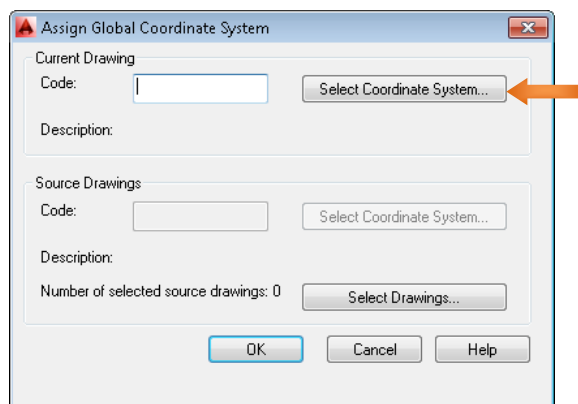
On the *Task Pane* palette select the *Map Explorer* tab; right-click on the Current Drawing name and select *Coordinate System...*:



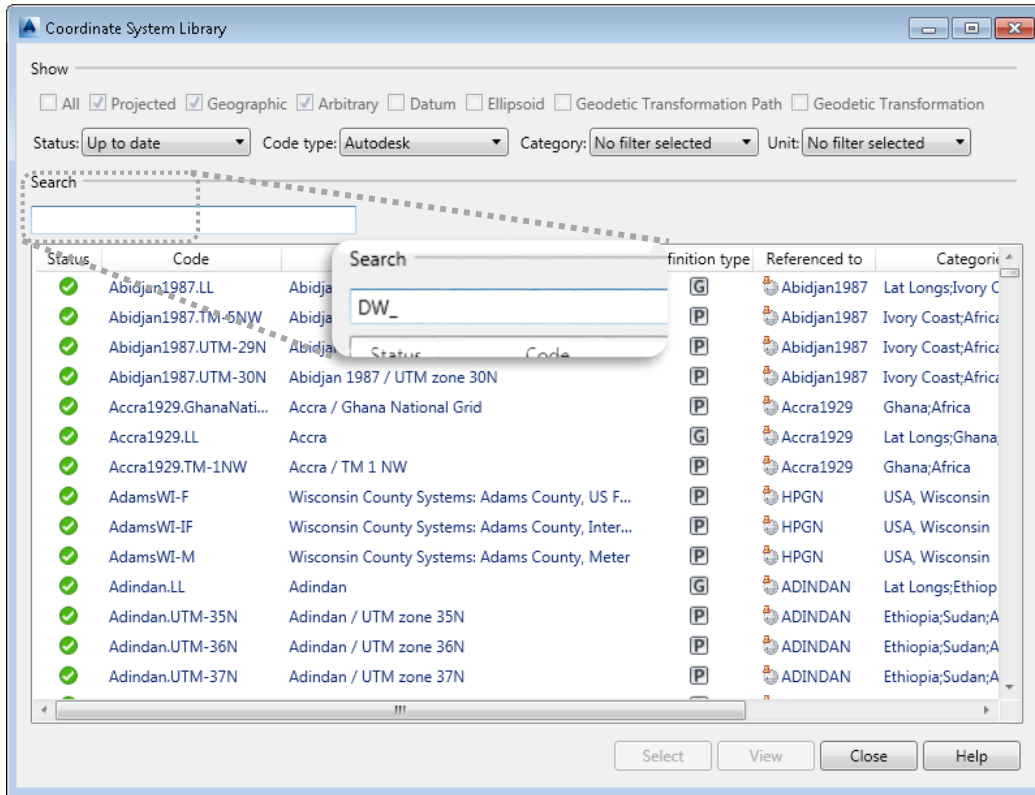
Tip: Quick Tools

A button to quickly Assign Coordinate Systems to a drawings has been added to the Quick Tools tool palette.

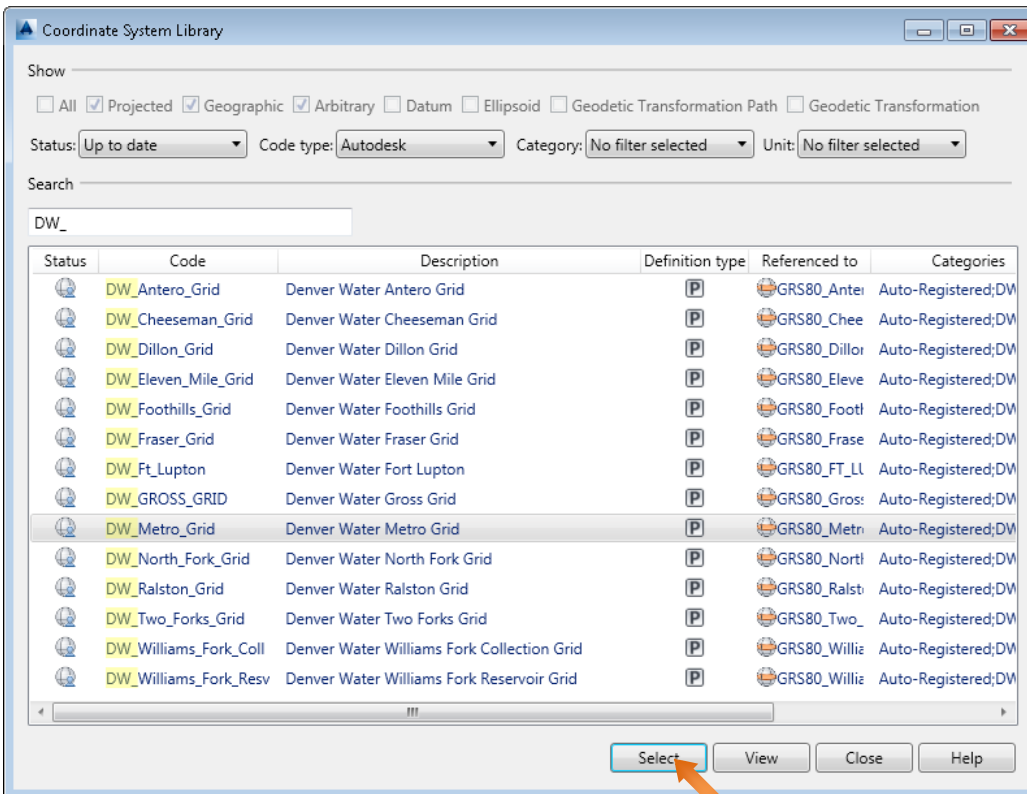
The *Assign Global Coordinate System* pop-up window will appear, click <Select Coordinate System...>:



The *Coordinate System Library* pop-up window will appear; to quickly access DW's custom Coordinate Systems type **DW_** in the empty search field:

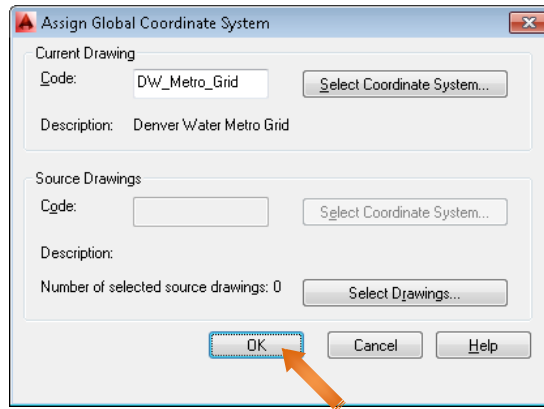


Within seconds all of DW's custom Coordinate Systems will display; choose the appropriate Coordinate System from the list and click <Select>:

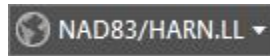


NOTE: ALL drawings in a project must have the same coordinate system.

The *Assign Global Coordinate System* pop-up window will reappear, click <OK >:



A visual indicator of the set Coordinate Systems can be seen on the Status Bar in the bottom right corner of the CAD Application (if you cannot see the current coordinate system, type MAPSTATUSBAR > ENTER; select SHOW > ENTER):

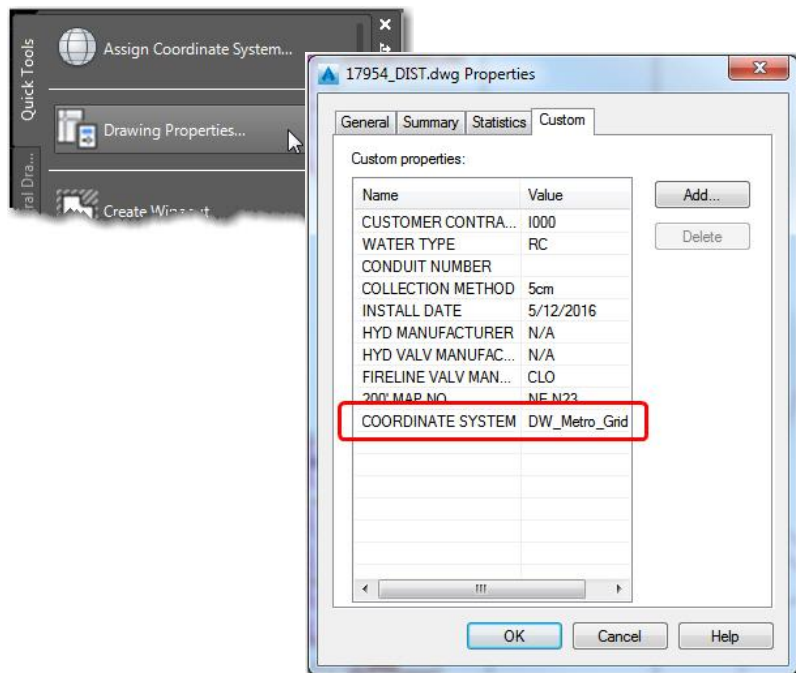


ATTENTION

A new drawing will have to be created if the Coordinate System was not set prior to objects being placed in Model Space.

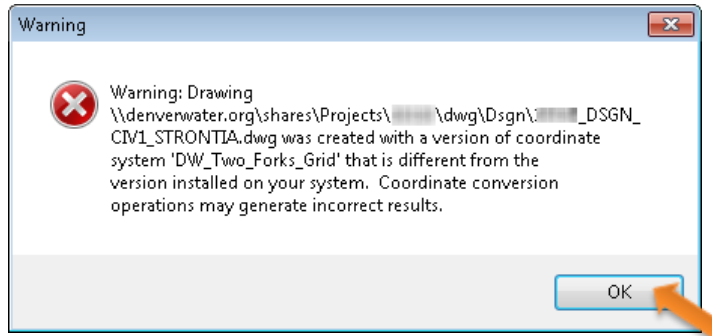
SETTING COORDINATE SYSTEM IN SHEET SET PROPERTIES (INTERNAL ONLY)

You can set the coordinate system so that it is present within each sheet. To set the coordinate system within the sheet set properties, it is located on the *Quick Tools* tool palette in the *DW General* group, here:



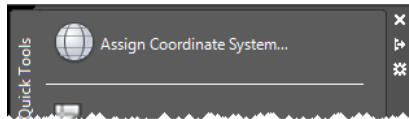
RESETTING COORDINATE SYSTEMS

Occasionally a Warning error may occur upon opening a drawing, indicating something is wrong with the Coordinate System within that drawing; click <OK> on the pop-up window:

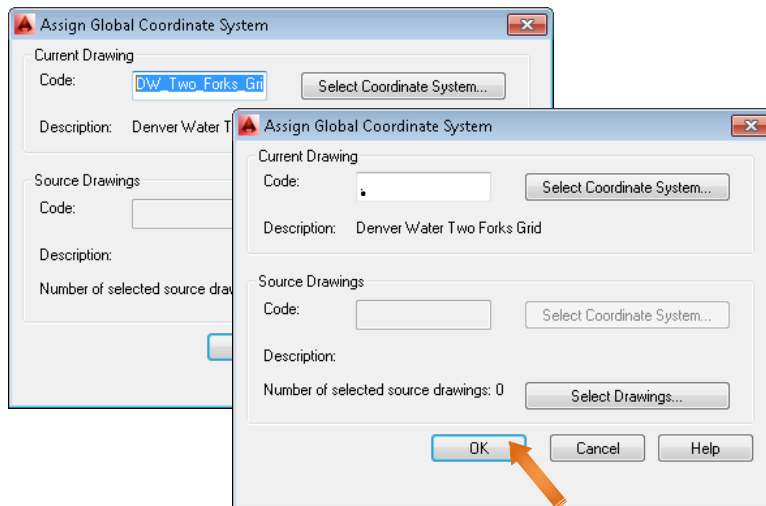


NOTE: If the Coordinate System does not get reset this error will continue to pop-up when opening the file, or during plotting and publishing.

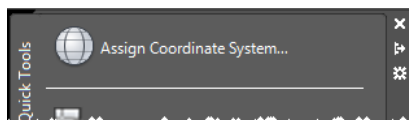
Once the drawing is open, click *Assign Coordinate System* on the *Quick Tools* tool palette; or use the Task Pane as shown previously:



The *Assign Global Coordinate System* pop-up will appear; replace the information in the "Code" field with a period (.); click <OK>:



For the second time, click *Assign Coordinate System* on the *Quick Tools* tool palette:



The *Assign Global Coordinate System* pop-up window will appear, click <Select Coordinate System...>

The *Coordinate System Library* pop-up window will appear; to quickly access DW's custom Coordinate Systems type **DW_** in the empty search field

All of DW's custom Coordinate Systems will display; choose the appropriate Coordinate System from the list and click <Select>

The *Assign Global Coordinate System* pop-up window will reappear, click <OK > NOTE: The steps shown above can be seen with screen captures on pages 11.0-3 thru 11.0-5. Please refer to [Section 18.2 ARG Drawings on Capital Projects](#) for additional details on Coordinate Systems.