

Section 13.2

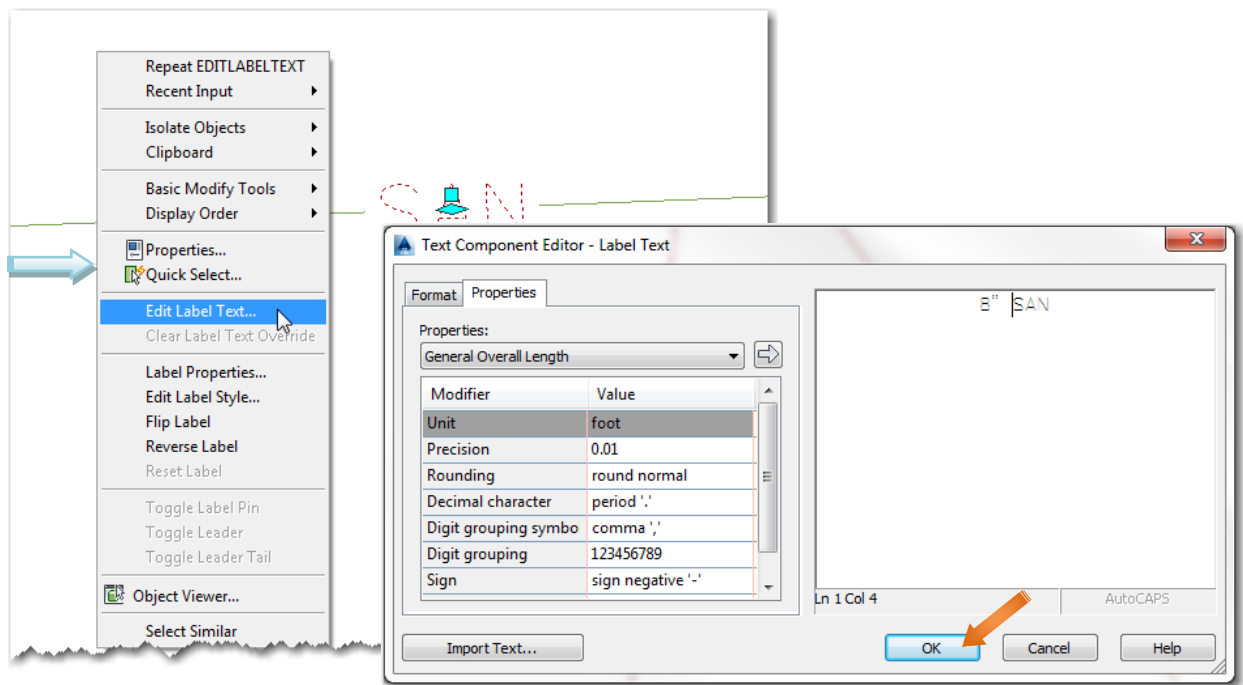
Civil 3D Labels

OVERVIEW - SECTION 13.2

It is typically necessary to edit Civil 3D Label text for Labels that have already been created.

EDITING CIVIL 3D LABELS (INTERNAL ONLY)

To edit a Civil 3D label, select the desired label, right-click, and select *Edit Label Text...* the *Text Component Editor* dialog box will appear. The text used in the C3D label appears in an editable text field on the right. By clicking in this text field the current label can be revised. Click <OK> when finished:



NOTE: Many label styles have more than one component. After selecting *Edit Label Text...* a pick-box will appear to select a specific component of the selected label.

Alternately, clicking the down arrow next to *Add Labels*, the user can choose the type of labels desired. Any feature in AutoCAD can be labeled using the Civil 3D labels, such as basic lines and curves, alignments, pipe networks, surfaces, etc.:

