

# Named Page Setups

### OVERVIEW - SECTION 16.2

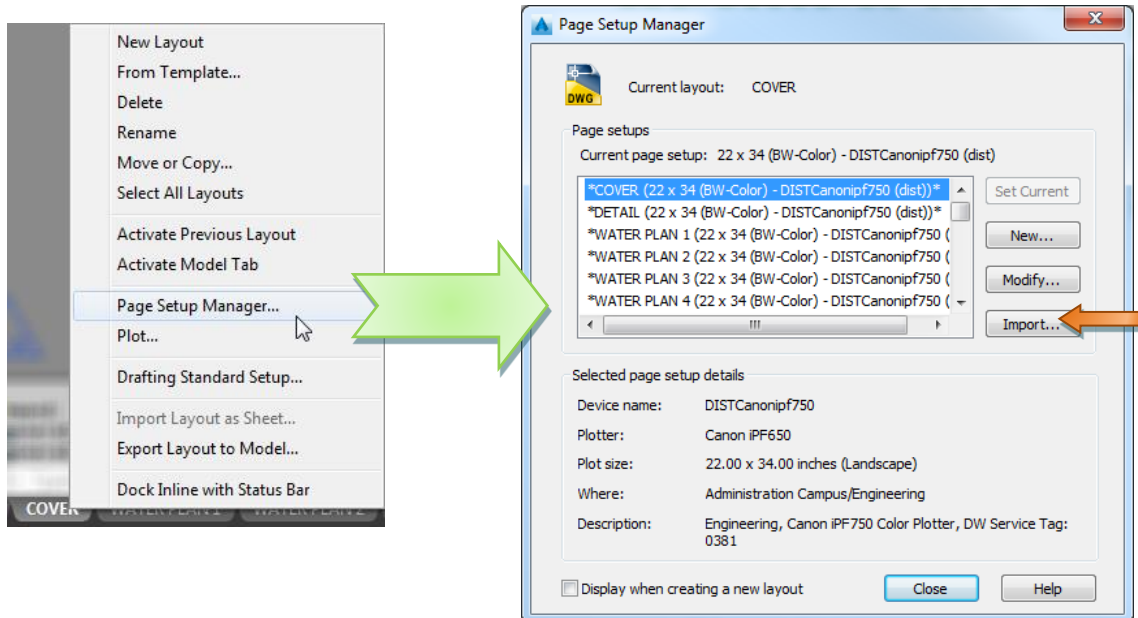
DW uses Named Page Setups that include the paper size, plotter names and other plot settings. These page setups have been predefined and applied to the layouts in DW's templates, which are maintained to reflect plotting with current DW CAD Standards and plotters. Plot settings held within the Page Setups include plotters, (.ctb) files, paper sizes, scale, and sheet orientation.

*Named Page Setups* may need to be adjusted or reimported from templates when plot settings change or are no longer needed in project drawings. *Named Page Setups* are important for Publishing with Sheet Sets properly.

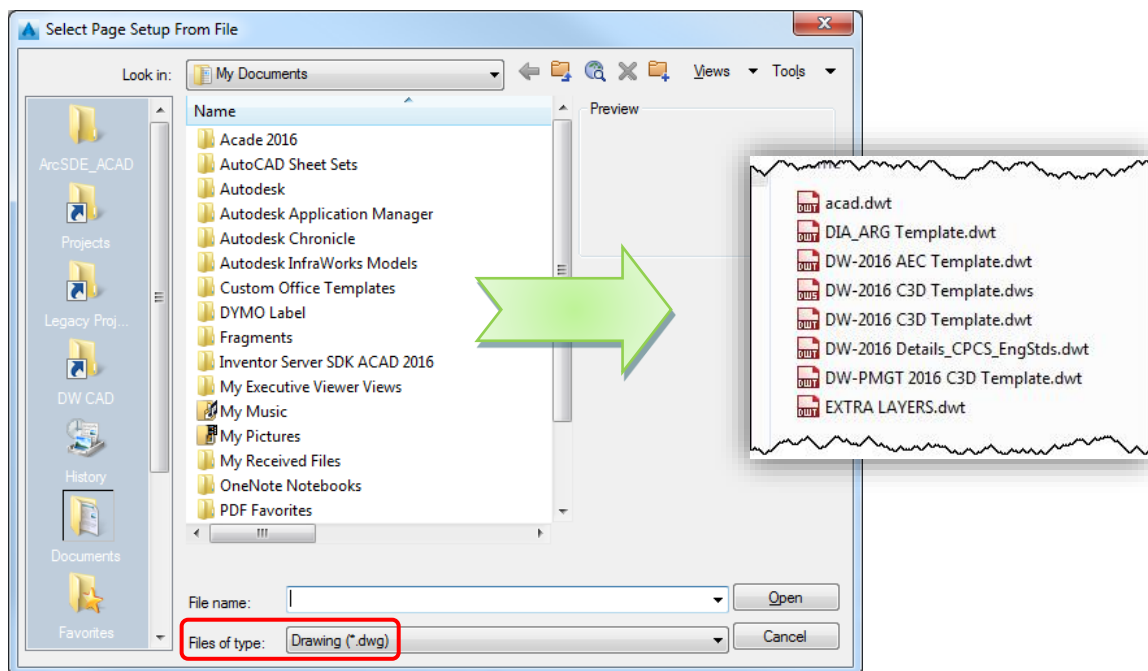
THIS PAGE INTENTIONALLY LEFT BLANK

## IMPORTING FROM TEMPLATES

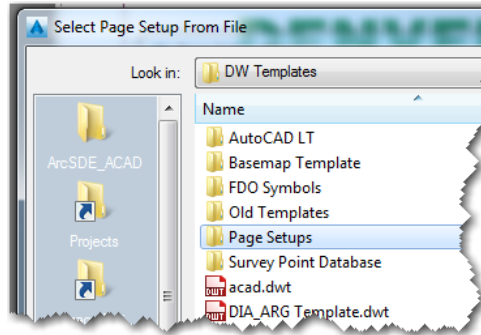
To update a *Named Page Setup*, right-click on the desired layout tab and select Page Setup Manager.... The Page Setup Manager pop-up window will appear listing all the current drawings page setups (these may vary from drawing to drawing) click <Import...>:



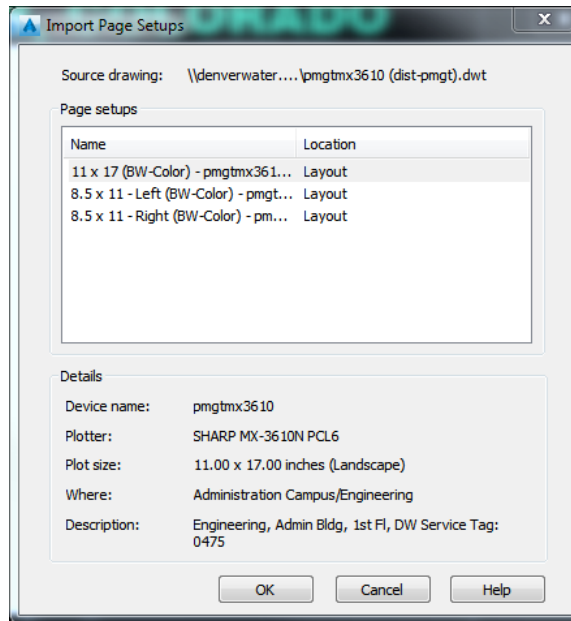
The *Select Page Setup From File* pop-up window will appear, set the **Files of type** to *Template (\*.dwt)* – DW's templates should now be listed:



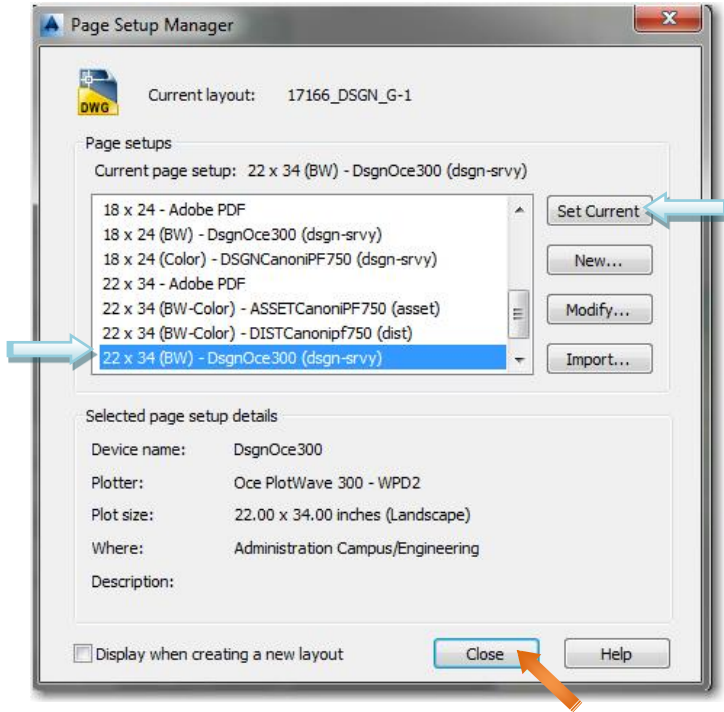
Choose the **Page Setups** folder in the *Select Page Setup Form File* pop-up window:



The *Import Page Setups* pop-up will appear listing the selected templates' *Named Page Setups*:



To apply the new setup to the current layout, select it in the *Named Page Setups* list and click <Set Current> and then <Close> once finished.



### Tip: Standard Page Setup

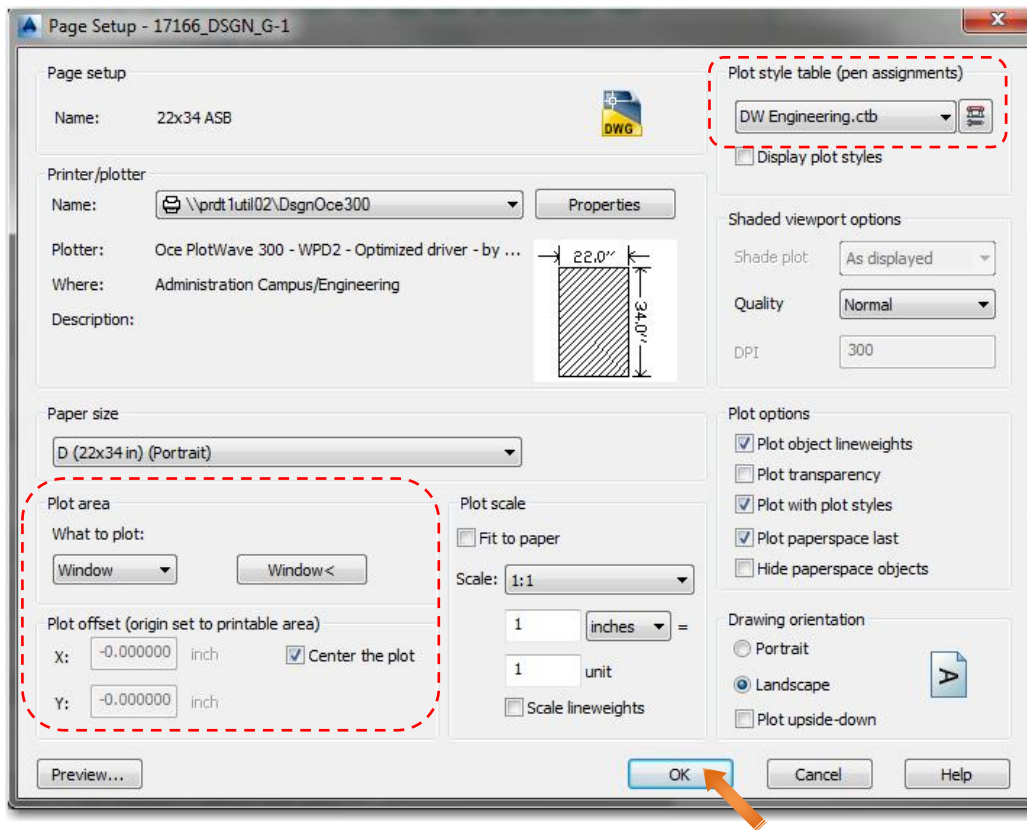
Page setups imported from current template may need to be revised when plotting older drawings.

### Tip: Standard Page Setup

NOTE: Named Page Setups also may be imported from .dwg files. This can be useful for updating multiple project drawings when old “non-standard” plot settings need to be used.

## MODIFYING PAGE SETUPS

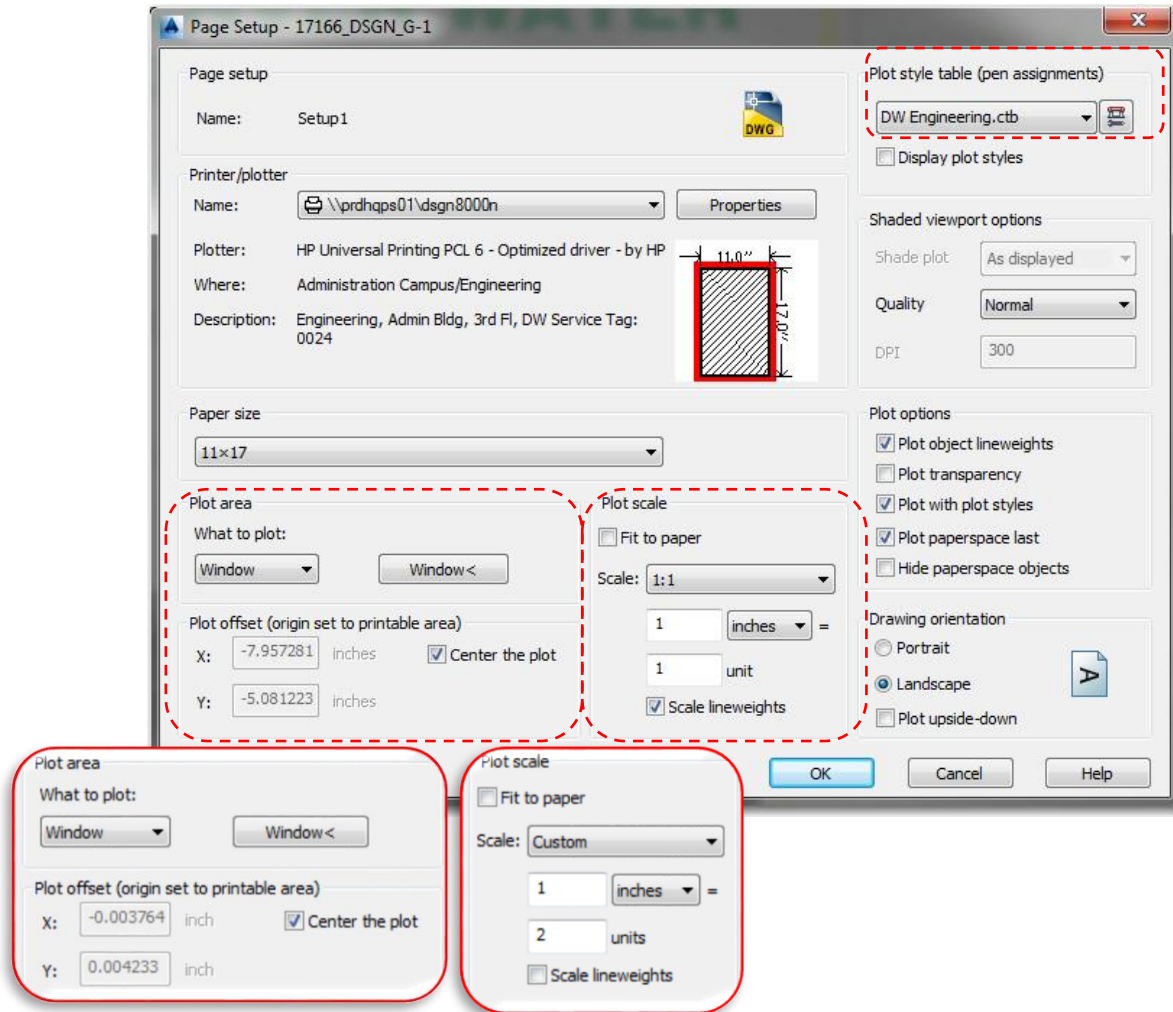
In some cases, Page Setups may need to be adjusted so that the plan output is reflective of the CAD Standards used with the creation of the project usually indicated by the color of the Title Block. Click <OK> when finished [see [Section 16.0 – Plotting & Publishing](#)].



The most common modifications to imported page setups are:

Ctb file- [see [Section 16.0 – Plotting & Publishing](#)].

1. *Plot Area*- typically this should be set properly, however title blocks could have been moved, resulting in necessary adjustments.
2. *Plot Scale*- Always 1"=1' for full sized plots- Half sized should always be 1'=2'.



**Tip: Preview**

When modifying Page Setups, it is always good to preview the plot.

## ERRORS AND TROUBLESHOOTING

This "Question" error will appear when importing a named Page Setup with the sample name already contained within the drawing- click yes to redefine and update:

