

## Section 16.3

# Publishing with Sheet Set Manager

### OVERVIEW - SECTION 16.3

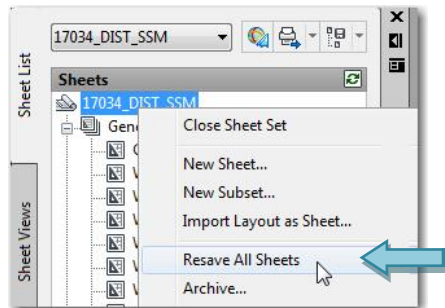
This Section describes how to use the PUBLISH command in conjunction with Sheets Set, use primarily for batch plotting.

THIS PAGE INTENTIONALLY LEFT BLANK

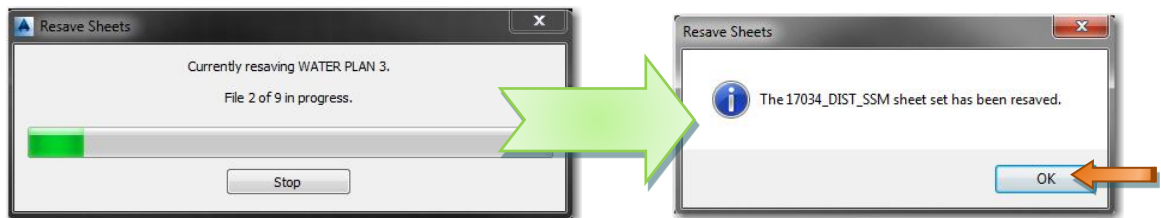
## PUBLISHING WITH SHEET SETS

Sheet Sets allows for the plotting of single or multiple sheets to plotters, PDF's, and DWF's. Please note that at least one drawing from the desired Sheet Set must be open for plotting and publishing [see [Section 7.0 - Sheet Set Manager](#)]:

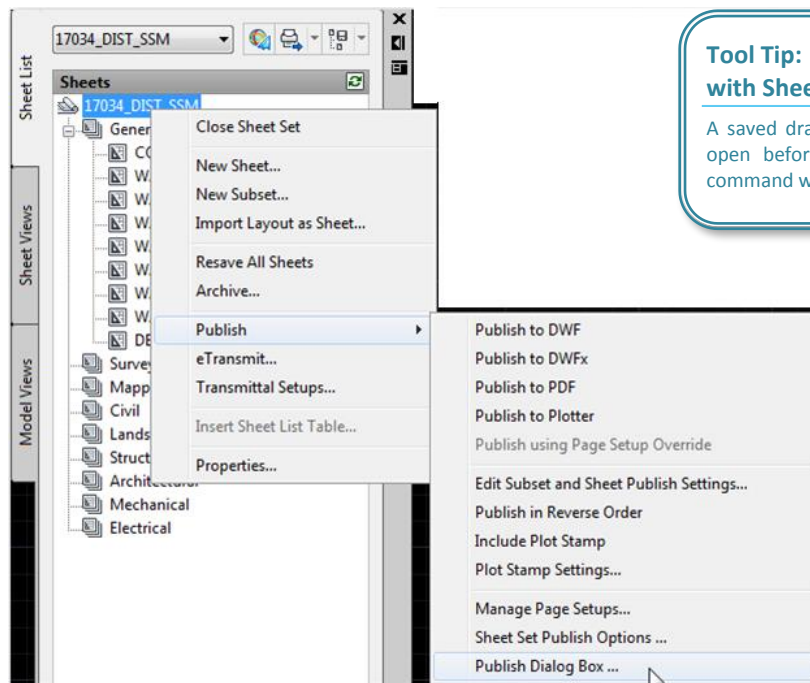
Sheets in the SSM must be synced first in order to be recognized. To do this, right-click on the Sheet Set name and select *Resave All Sheets*:



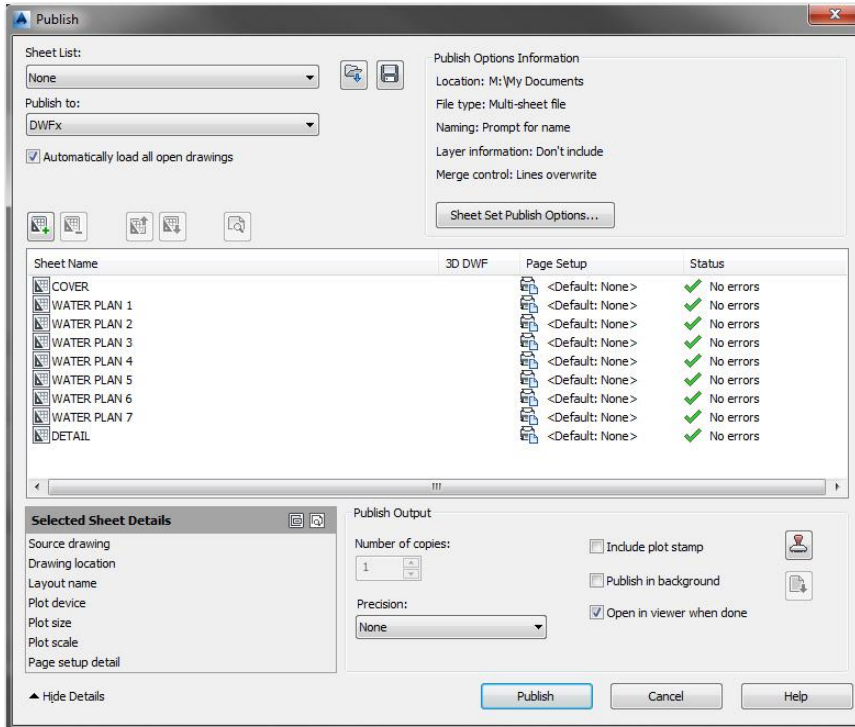
The *Resave Sheets* pop-up window will appear showing the progress of the sheets being synced; once it is finished, another pop-window will appear stating that the sheets have been resaved, click <OK>:



To accomplish this, right-click on the Sheet Set name in the Sheet Set Manager palette [see [Section 7.0 - Sheet Set Manager](#)], navigate to Publish, then select *Publish Dialog Box...*:

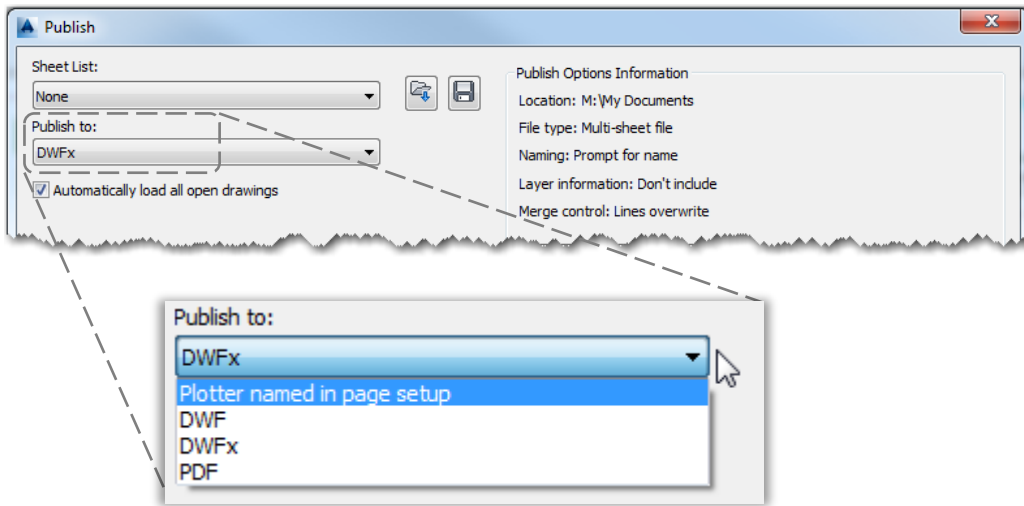


The *Publish* dialog box will then appear:

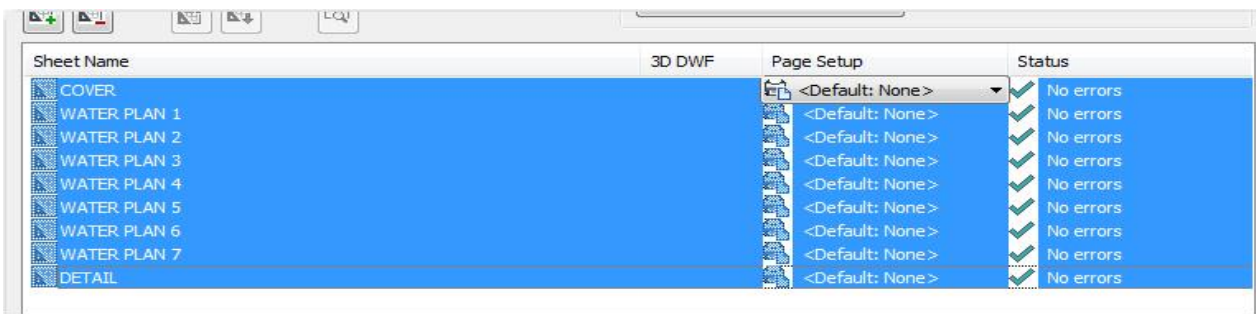


**Tip: Named Page Setups**  
 Named Page Setups must be correct in the drawings before this function works.

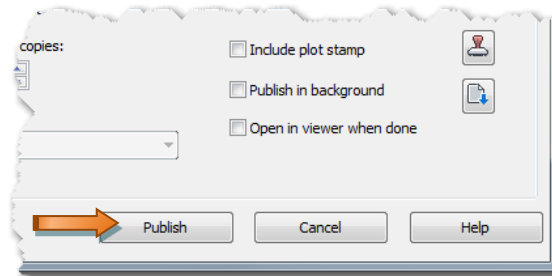
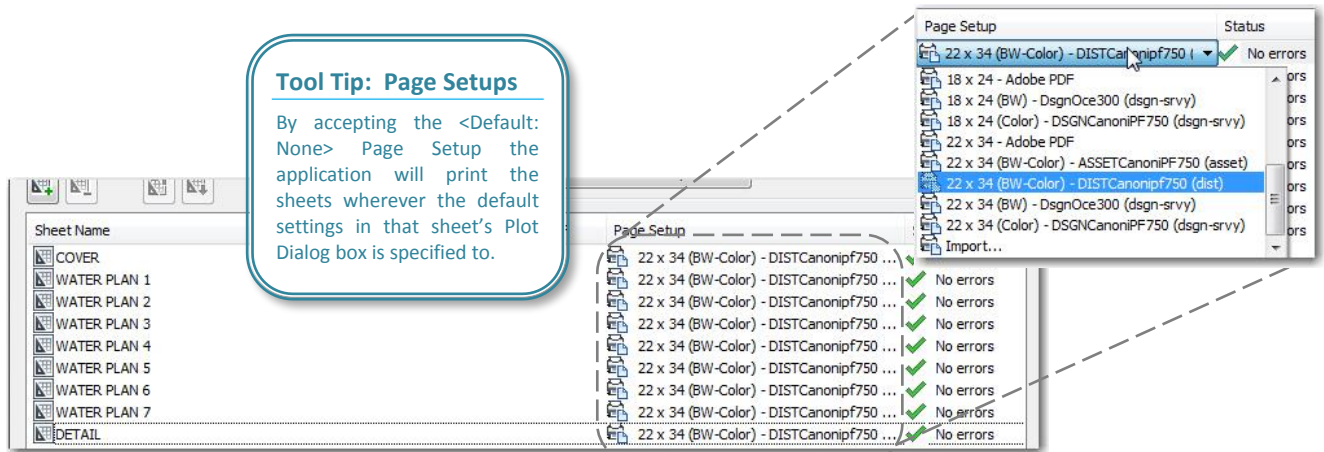
Use the Publish to pull-down to determine the final plan output type, select Plotter named in page setup:



Once the output type has been determined, select the sheets to be plotted – use the Shift and Ctrl keys to select multiple sheets:



The **Page Setup** pull-down has a list of the *Named Page Setups* contained within the selected drawings [see [Section: 16.2 – Named Page Setups](#)]. Choose the desired *Named Page Setup*, to be applied to all sheets:



**NOTE:** It is not recommended for DW's internal CAD Community to use the *Publish in background* option.

THIS PAGE INTENTIONALLY LEFT BLANK