

Drawing Cleanup Tool

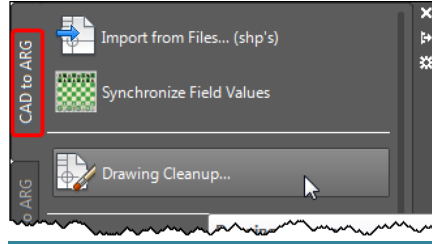
OVERVIEW - SECTION 17.3

There are many tools available for use in cleaning up a project drawing(s). Drawing Cleanup should be used when a drawing is finished for quality assurance quality checks (QAQC). Drawing cleanup helps you improve the accuracy of your maps, correct common map errors, and remove unnecessary detail from complex drawings or As-Builts. This is essential when you need accurate and complete maps suitable for design.

Drawing Cleanup is a sequence of pages that guide you through specifying the set of objects to include in a drawing cleanup operation, the objects to anchor, the cleanup actions to perform and the settings to use, how to treat the objects after cleanup, and the error marker settings (for interactive mode only).


USING DRAWING CLEANUP

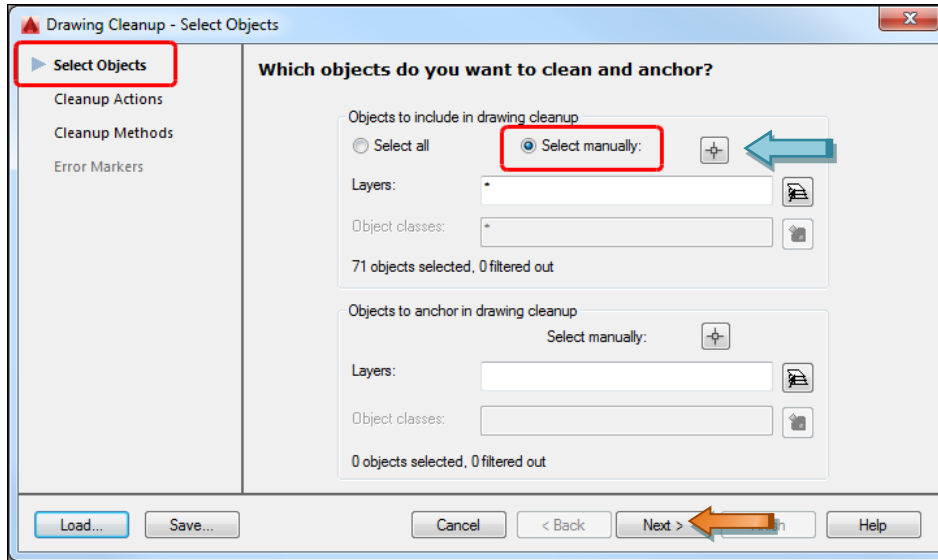
Drawing cleanup can be accessed via the keyboard shortcut MAPCLEAN; or *Drawing Cleanup...* located on the *CAD to ARG* Tab on the As-Builts Tool Palette:



SELECT OBJECTS

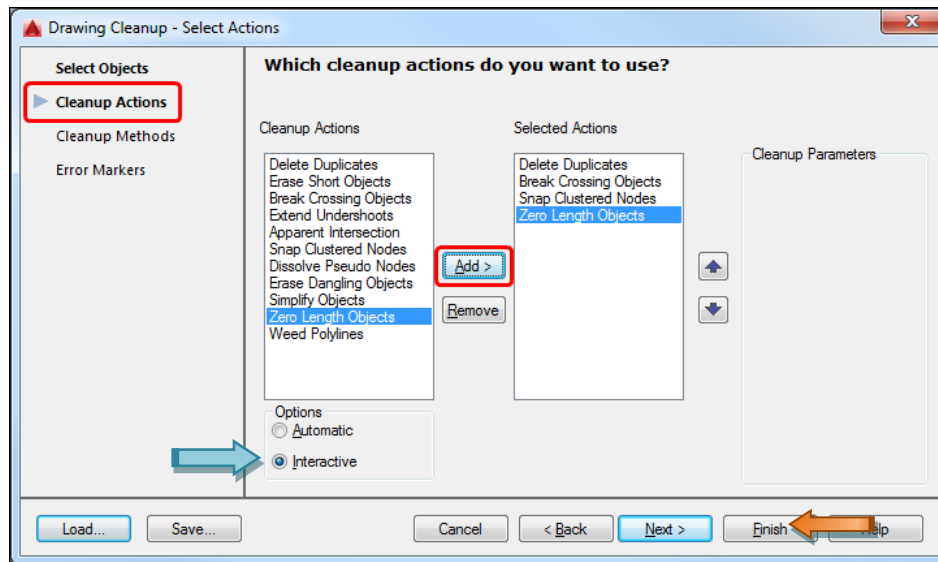
For ARG drawing cleanup see [Section 18.4 – Drawing Cleanup Tool for ARG Drawings](#).

Select *Select manually*: and click the button , type ALL or manually select the objects that you want to be checked for errors. Once the desired objects are selected, select *Next >*:



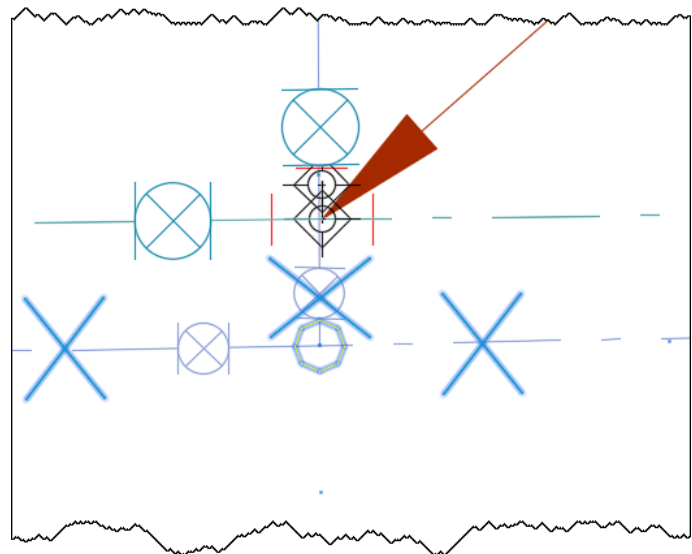
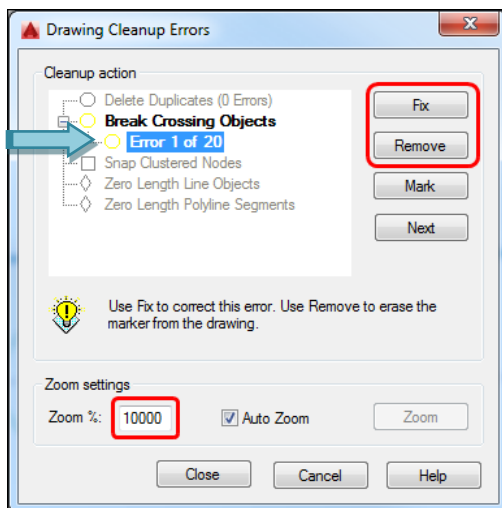
CLEANUP ACTIONS

Select which desired Cleanup Actions you wish to add and Select *Add >*. Ensure that *Interactive* is selected under *Options*, select *Finish*. Typically, options are not modified under *Error Markers*:

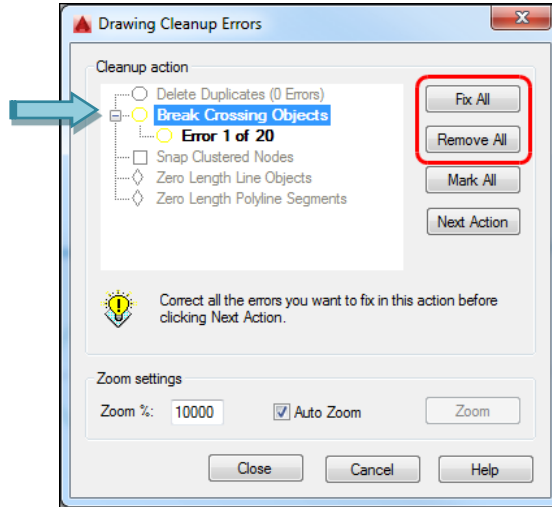


DRAWING CLEANUP ERRORS

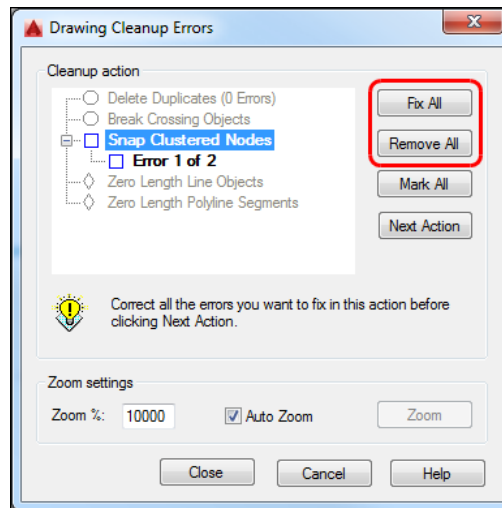
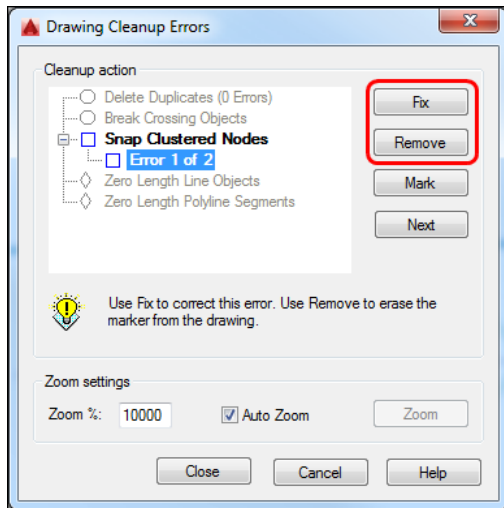
To manually review errors individually select the plus sign next to the Cleanup Action, in this case *Break Crossing Objects*. Ensure that the *Zoom %*: under *Zoom settings* is a very high number, to view each error close enough. You can choose to correct the error by choosing *Fix* or ignore it by selecting *Remove*:



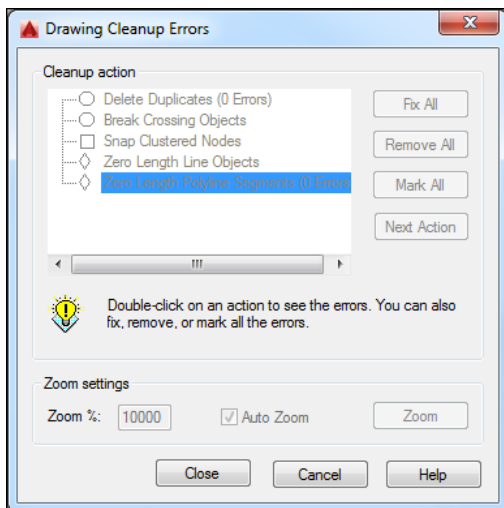
To review errors at one time select the Cleanup action, in this case *Break Crossing Objects*. To correct all errors select *Fix All* or to ignore all errors select *Remove All*:



Similarly for each Cleanup Action:



Once all errors are reviewed, select *Close*:



NOTE: You must be very cautious with the Drawing Cleanup Tools and review each cleanup action thoroughly before fixing.