

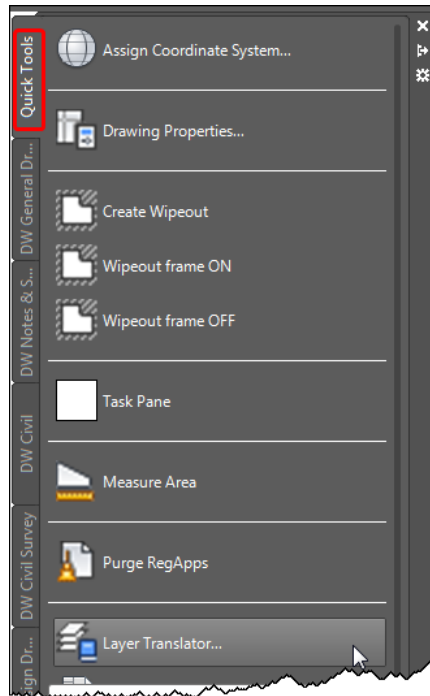
Layer Translator

OVERVIEW - SECTION 17.4

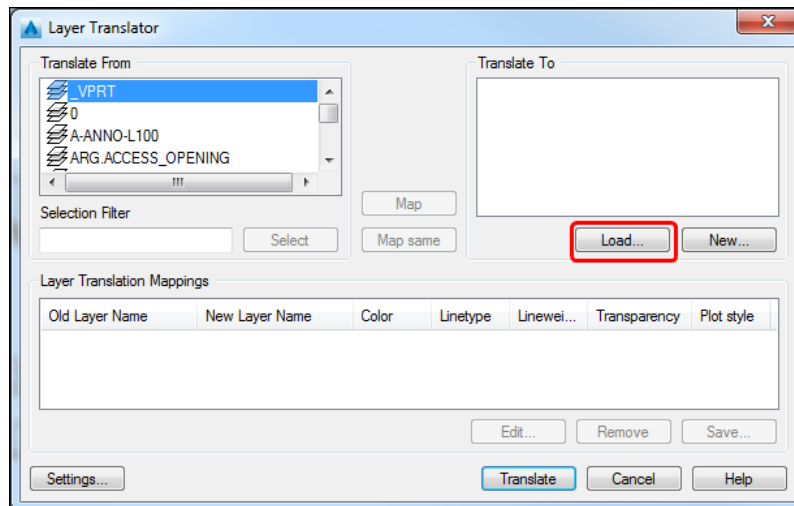
Layer Translator maps the layers in the current drawing to different layer names and layer properties in a specified drawing or standards file, and then converts them using those mappings. This tool is useful when using an SDE connection, when bringing in data from GIS to an existing drawing.

USING THE LAYER TRANSLATOR TOOL

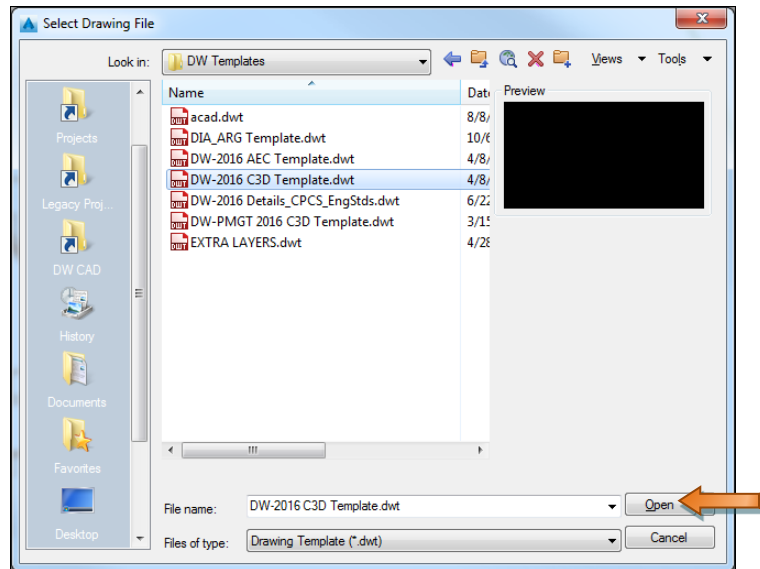
Layer translator can be accessed by the keyboard shortcut LAYTRANS; on the ribbon, the *Manage* Tab, under CAD Standards, Layer Translator; or the *Quick Tools* tab on the *DW General Tool Palette*.



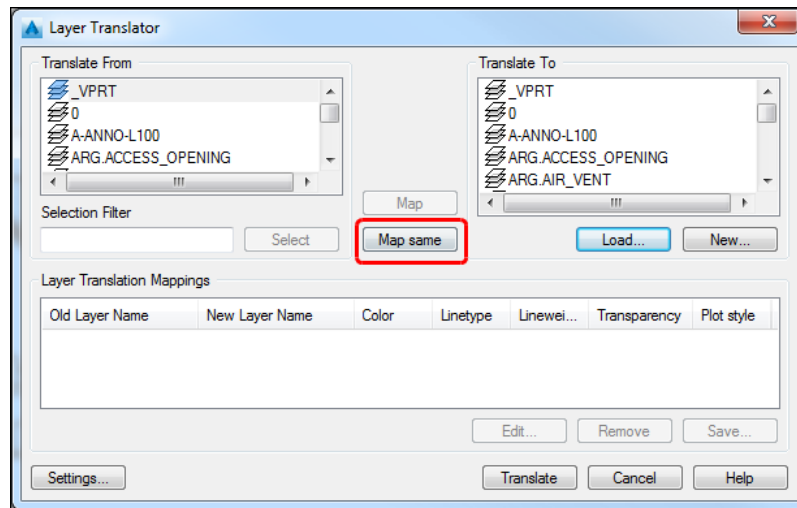
Select *Load...* on the Layer Translator Dialog Box:



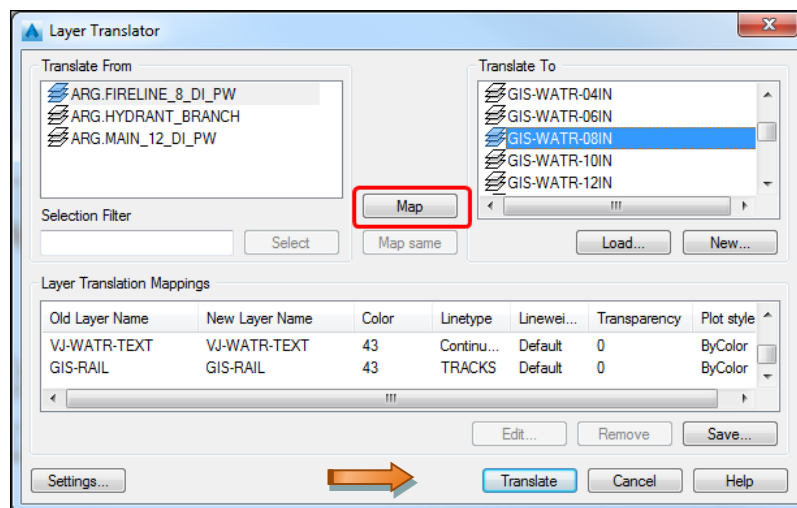
Select the template that is appropriate to the project, then Select *Open*:



Select *Map same*, any layers that have an exact match will automatically be loaded:



Any layers that remain under *Translate From* need to be manually added. Individually select a layer under *Translate From*, locate the appropriate layer under *Translate To*, then Select *Map*. Once there are no remaining layer under *Translate From*, select *Translate*:



Then select *Translate only*. Refer to [Section 18.0 – CAD to GIS: Creating ARG As-Built Drawings](#) for more information:

