

Application Settings

TABLE OF CONTENTS: SECTION 2.0

Overview - Section 2.0.....	2.0-3
Options Dialog Box (Internal Only).....	2.0-3
<i>Display Tab</i>	2.0-3
<i>Open and Save Tab</i>	2.0-4
<i>User Preferences Tab</i>	2.0-5
<i>Drafting Tab</i>	2.0-6
<i>3D Modeling Tab</i>	2.0-7
<i>Selection Tab</i>	2.0-8

THIS PAGE INTENTIONALLY LEFT BLANK

OVERVIEW - SECTION 2.0

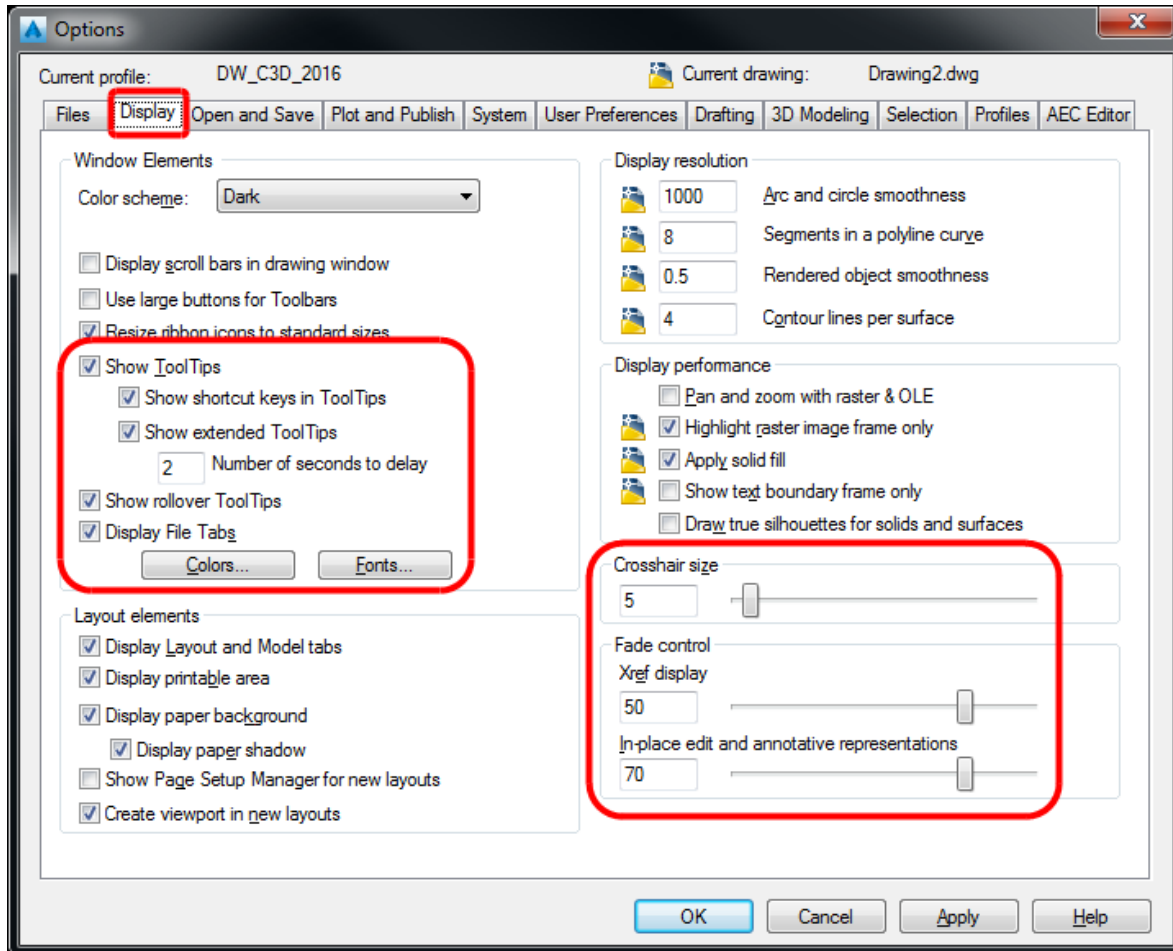
This section outlines the acceptable changes to the AutoCAD Civil 3D 2016 Options menu. The options have been saved in the *DW-2016-C3D* profile, tested on the current Denver Water platform, and run in conjunction with the Enterprise CUI. Only the specified portions are allowed to be changed, **all** other options may be reverted back to their original state at **any** time without notice.

OPTIONS DIALOG BOX (INTERNAL ONLY)

Do not alter settings outside of areas identified by the rounded rectangles (see below).

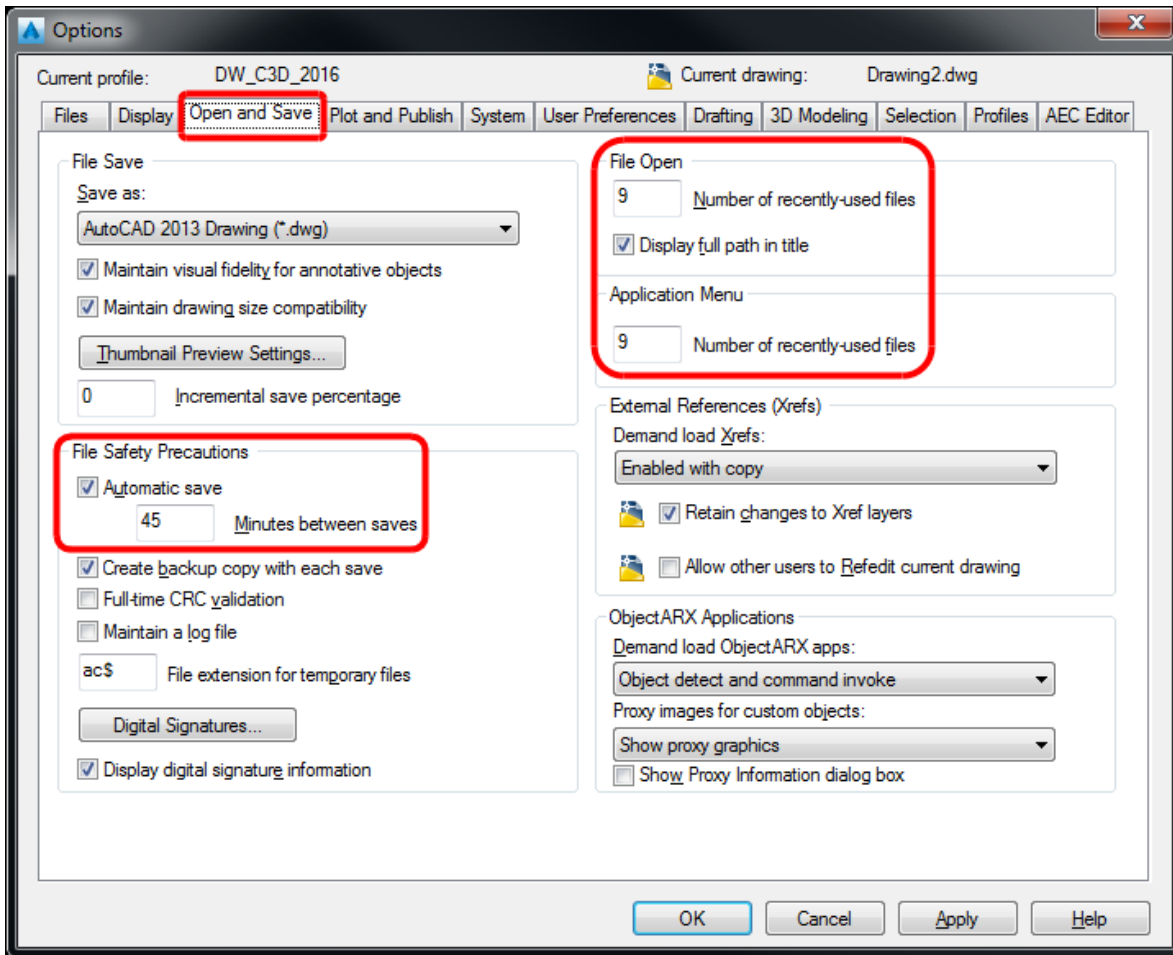
DISPLAY TAB

Customizes the screen display:



OPEN AND SAVE TAB

Controls options that relate to opening and saving files:

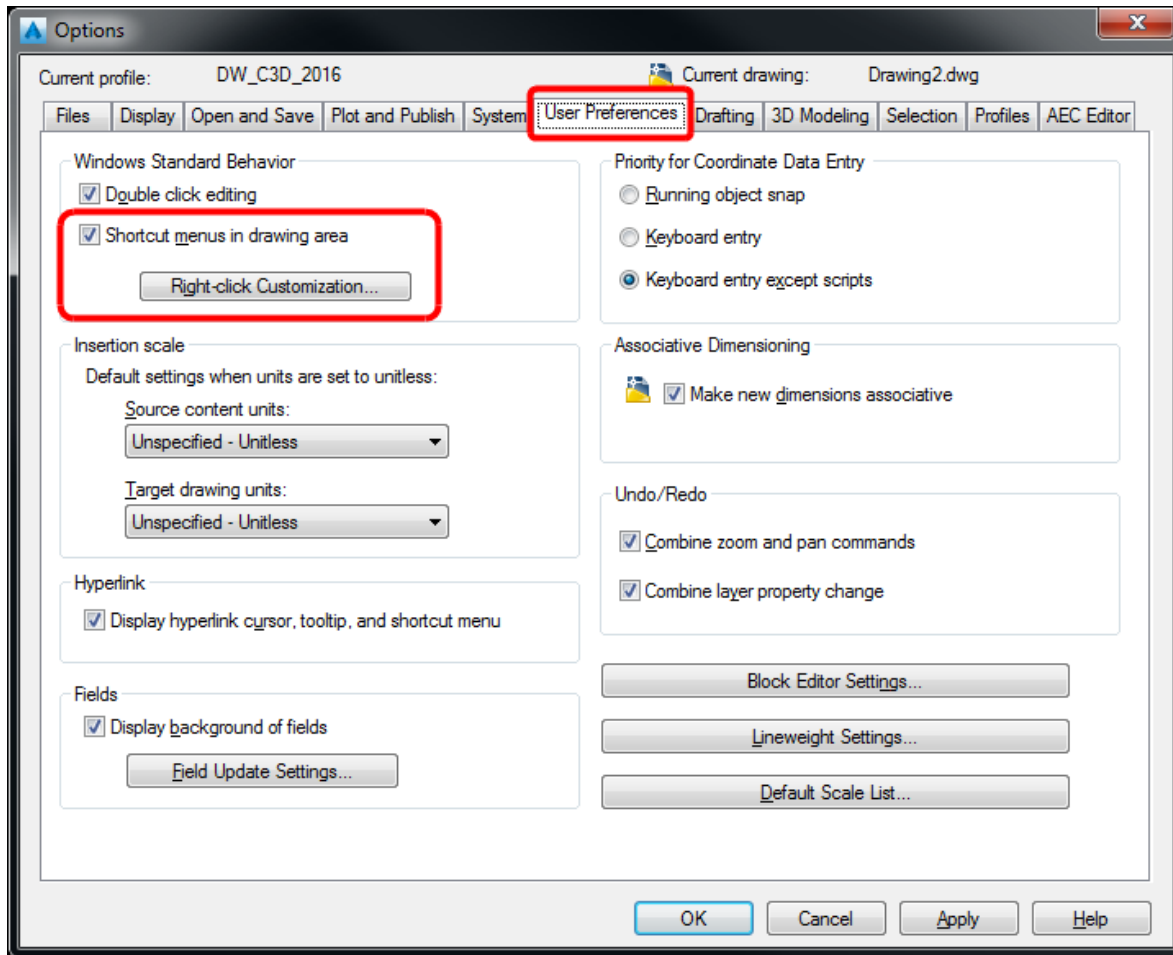


ATTENTION

Do not change the "Save as" option to an earlier format, this will break intelligent Civil 3D objects.

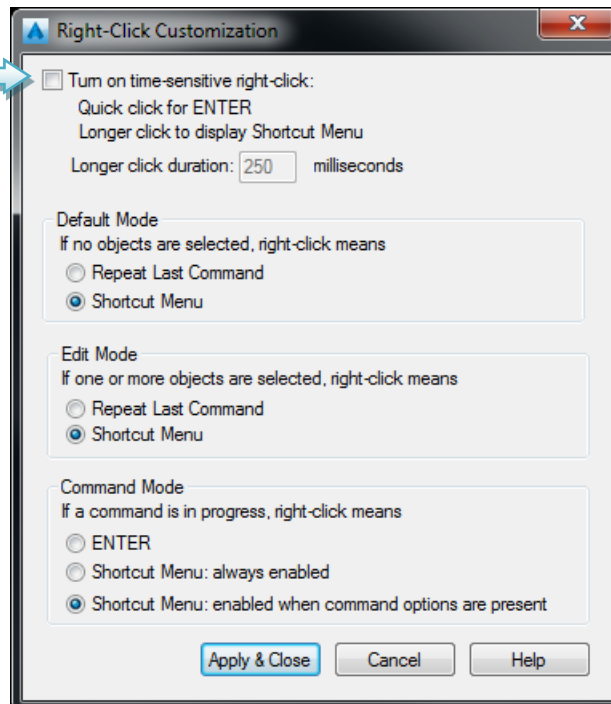
USER PREFERENCES TAB

Controls options that optimize the work environment for End-Users:



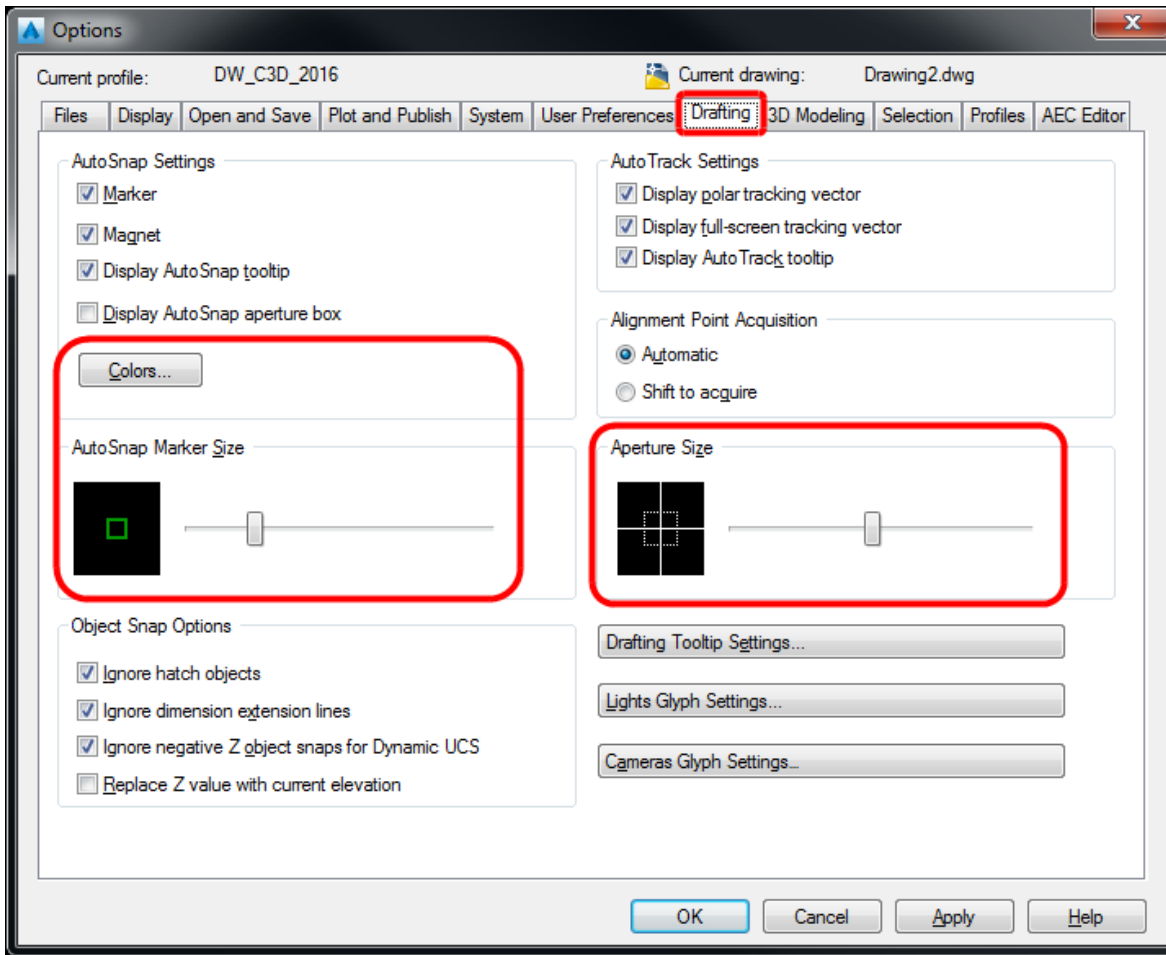
Tool Tip: Right-click

Check this box to enable the Right-Click to function as an ENTER and display menus needed for Civil 3D.



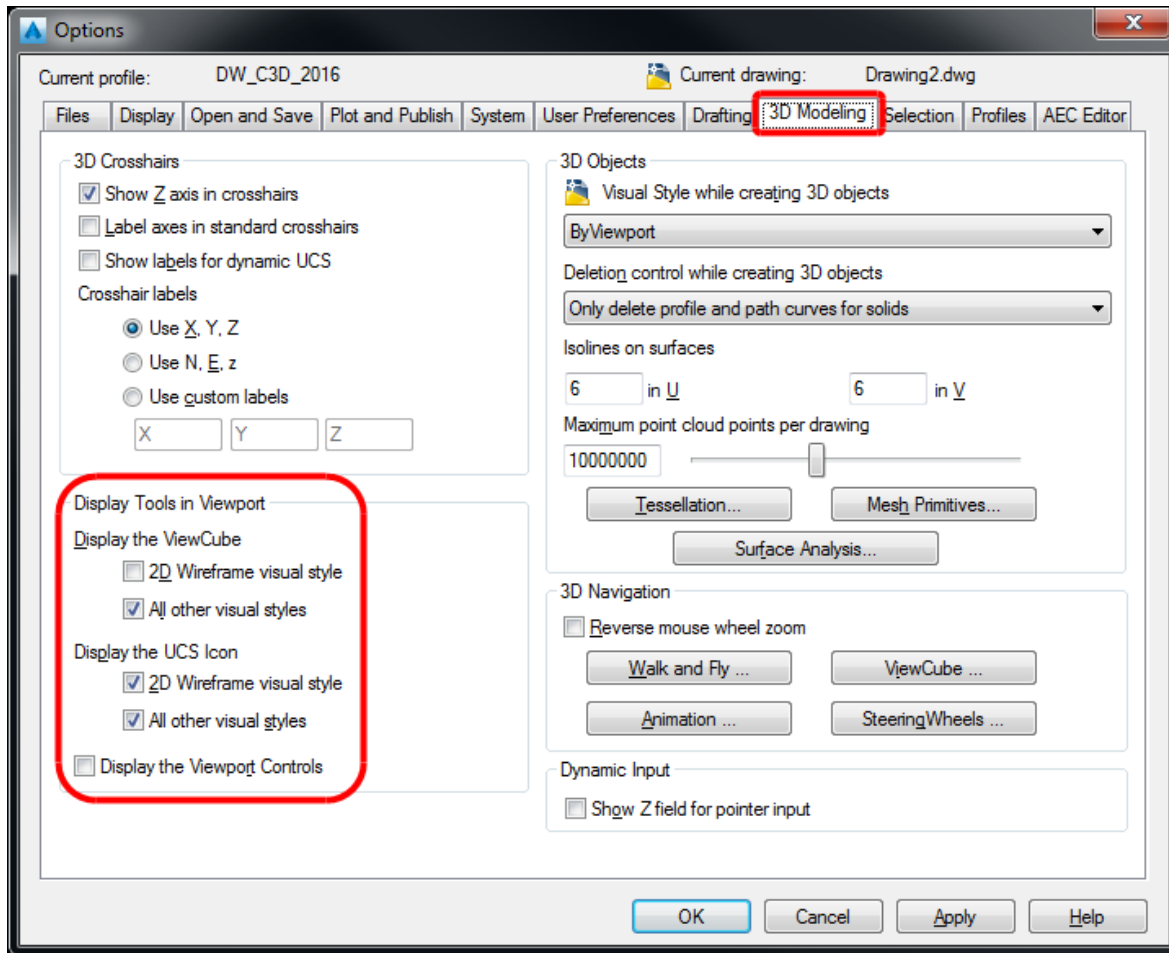
DRAFTING TAB

Sets options for various editing features, including AutoSnap and AutoTrack:



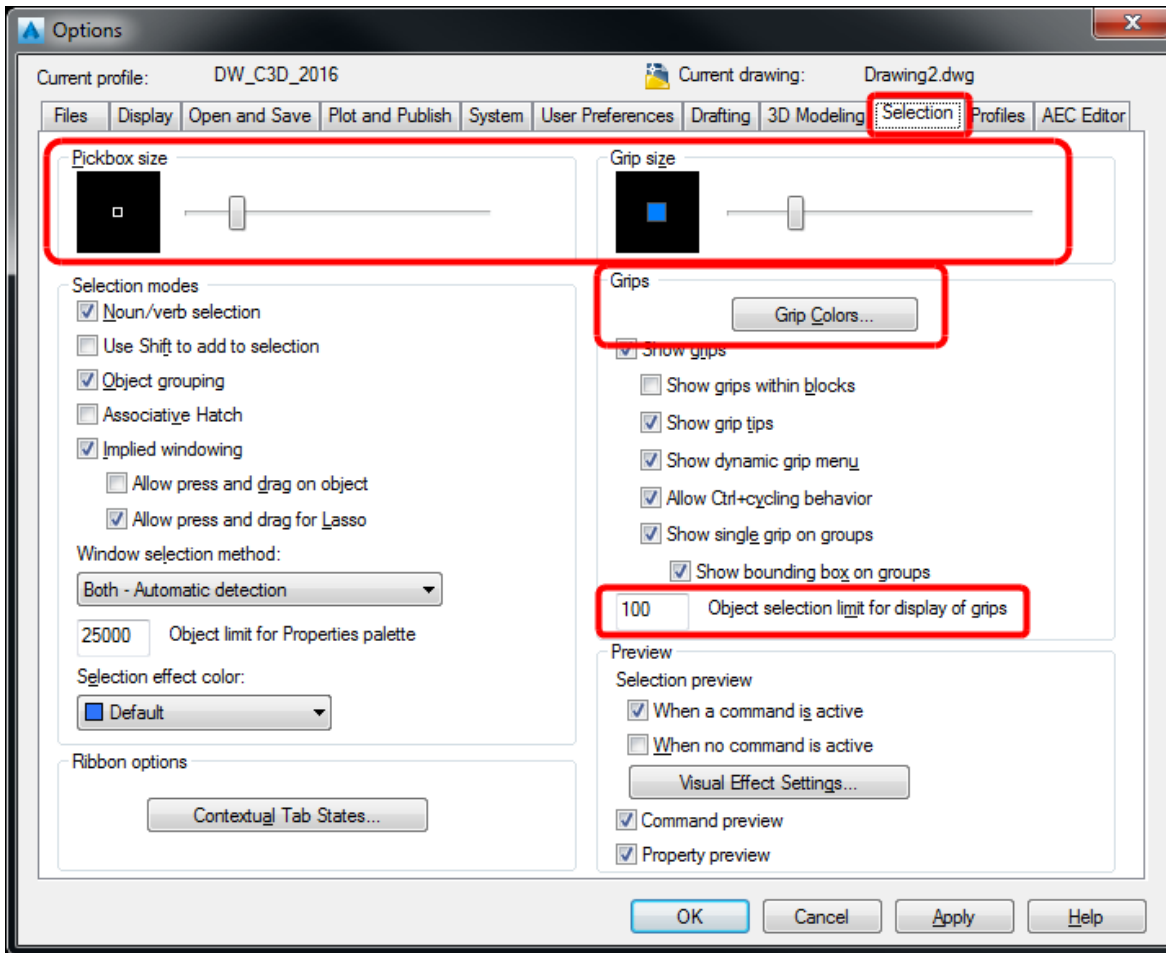
3D MODELING TAB

Sets options for working with solids and surfaces in 3D:



SELECTION TAB

Sets options for selecting objects:



ATTENTION

INTERNAL USERS ONLY: Changing any of the “Selection modes” settings from their current selections can, and will, cause unexpected drafting results. Profiles Tab: **DO NOT** create new profiles, rename, or import and/or export current profiles. Use Workspaces to save User interface settings.

Users will require an Autodesk 360 account to access certain tools (such as GEOMAP). Autodesk 360 accounts are free through Autodesk, but most services are not. **Your work account must be linked to Denver Water’s Autodesk maintenance plan.**

NO options will be edited on any tabs not shown above (Files, Plot and Publish, System, Profiles or AEC Editor).