

# External References (XREF's)

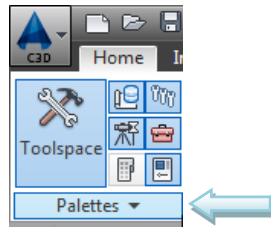
### OVERVIEW - SECTION 9.2

Another type of data sharing is through *External References (XREF's)*. An XREF is a reference to a file outside of the current drawing that acts as though it is part of the current drawing. AutoCAD 2016 allows XREFs of DWGs, DWFs, DWFx, PDFs, DGN underlays, and raster images. **The survey/base map drawings shall be XREF'd into design drawings as a basis for work; DO NOT do a "Save As" or insert as a block.**

THIS PAGE INTENTIONALLY LEFT BLANK

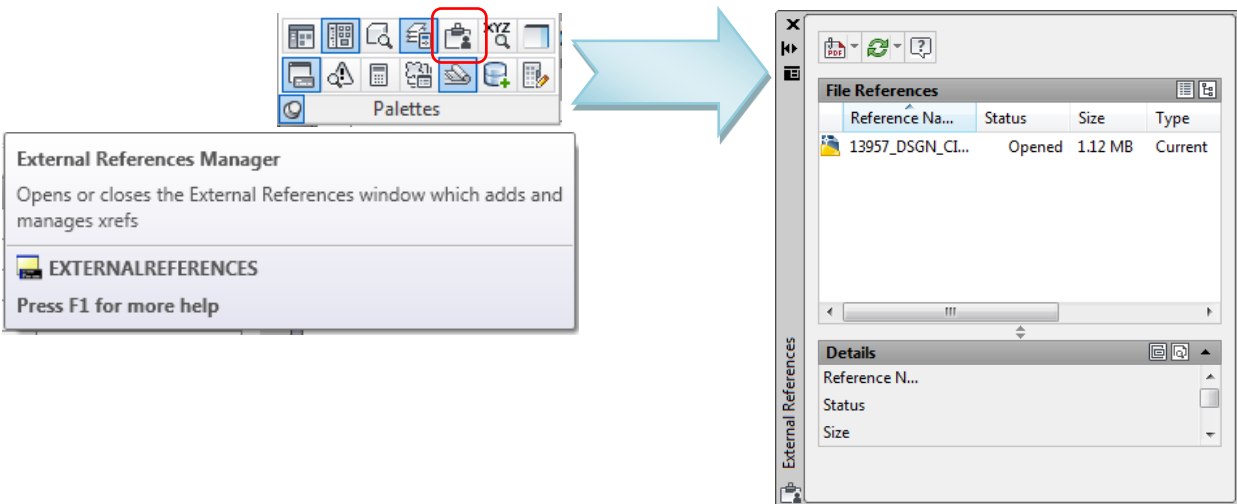
## ATTACHING AN XREF

To XREF, while in Model Space, navigate to the Home tab on the ribbon, select the Palettes panel pull-down:

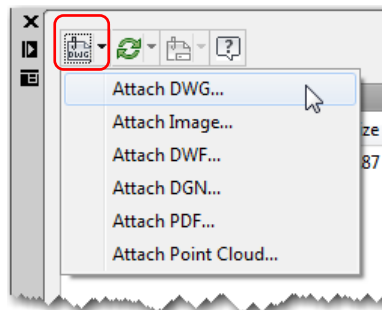


**NOTE:** Select appropriate layer first, typically C-ANNO-REFR or G-ANNO-REFR, before inserting XREF.

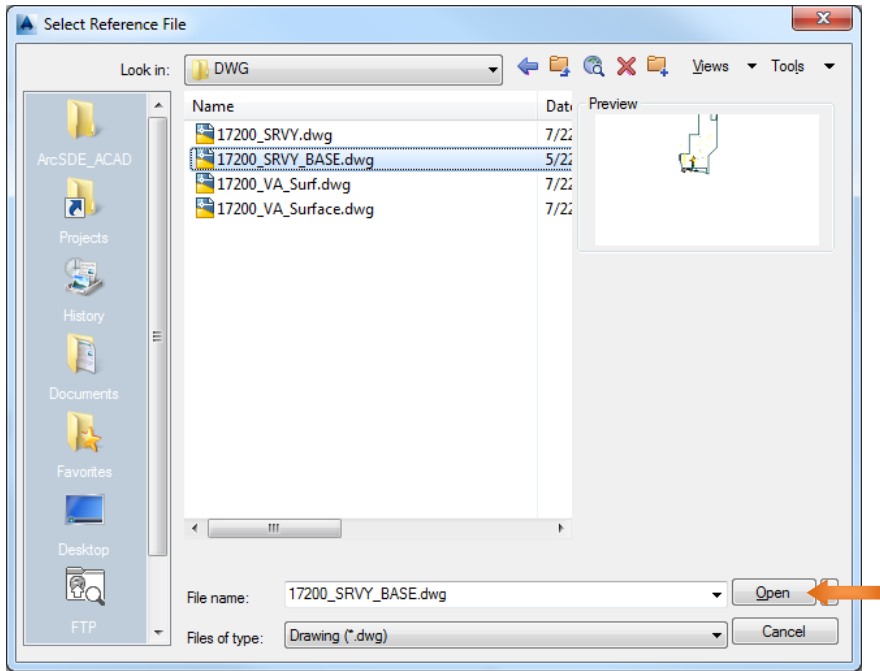
In the expanded palettes application, click the icon that looks like a clipboard (or XR, then ENTER); this will launch the *External References* palette:



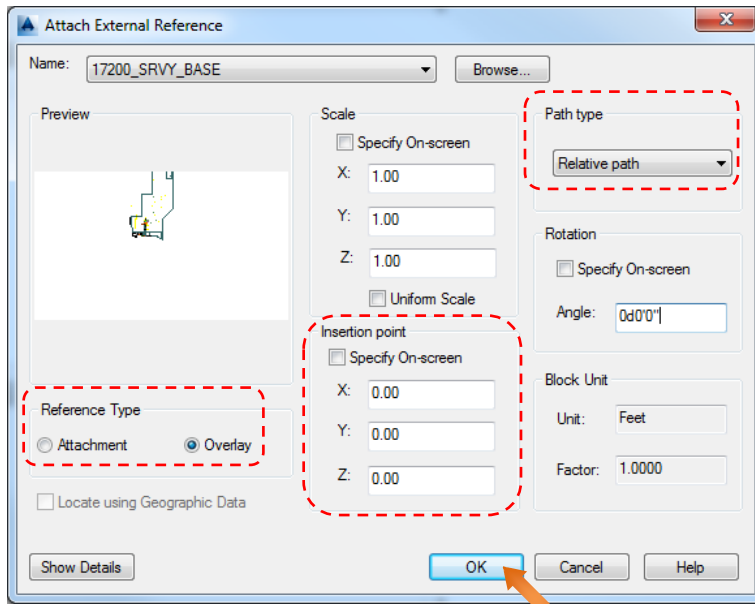
Using the *attach* icon pull-down, select the type of external reference desired; for example:



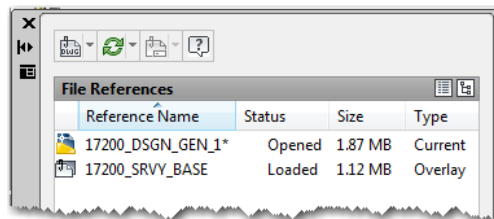
In the *Select Reference File* pop-up window, navigate to the location where the desired reference drawing is located. Select the desired file and click <Open>:



The *Attach External Reference* pop-up window will appear. Check that the **Reference Type** is Overlay, the **Insertion point** for X, Y, and Z is set to 0, and **Path type** is Relative, and then click <OK>:



The reference will now be visible in the *External References* palette and in Model Space of the drawing:



**NOTE:** The user may need to preform a zoom extents in Model Space to view the XR.