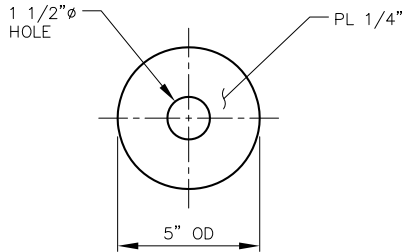
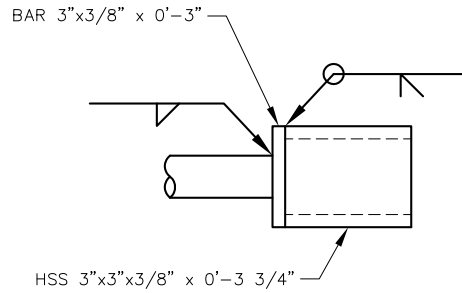


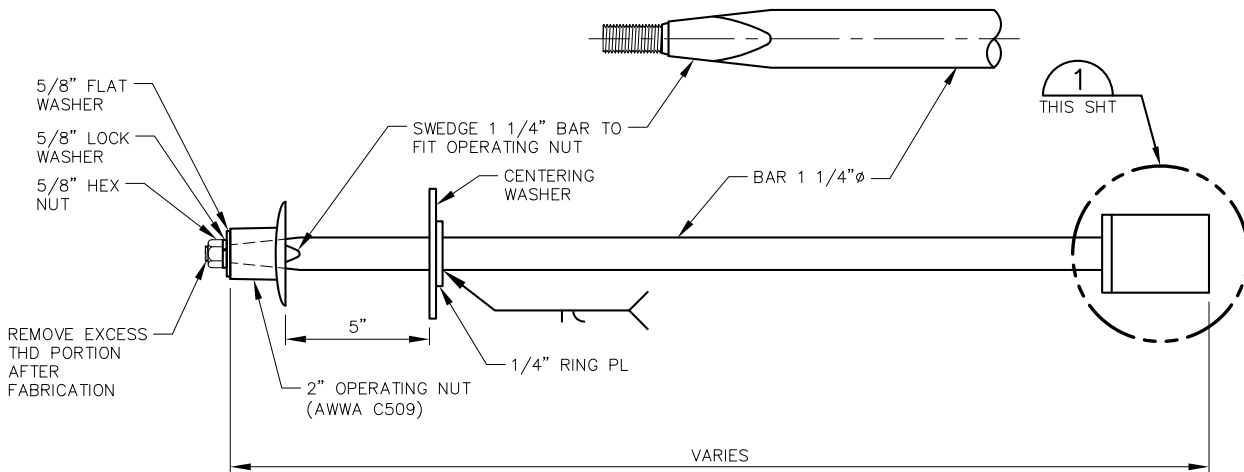
RING PLATE



CENTERING WASHER



DETAIL 1
THIS SHT



VALVE OPERATOR EXTENSION

NOTES:

1. BAR AND PLATE SHALL BE ASTM A 36.
2. HSS SHALL BE ASTM A 500 GR B.
3. ASSEMBLY SHALL BE COATED WITH LIQUID EPOXY, 16 MIL DRY FILM THICKNESS IN ACCORDANCE WITH AWWA C210. COLOR: BLACK SHEEN: FLAT

DENVER WATER

1600 West 12th Avenue • Denver, Colorado 80204
Phone (303) 628-6000 • Telecopier No. (303) 628-6851

VALVE OPERATOR EXTENSION

Scale: NONE Date: June 2014

Drawn: C.B.B. Ck: K ROSS

Approved: [Signature] Dr. 127 No. 35