



**DENVER WATER**

## Creating DWF's using AutoCAD Irrigation and Landscape Submittals

## Revision History

Revision	Date	Page(s)	Changes

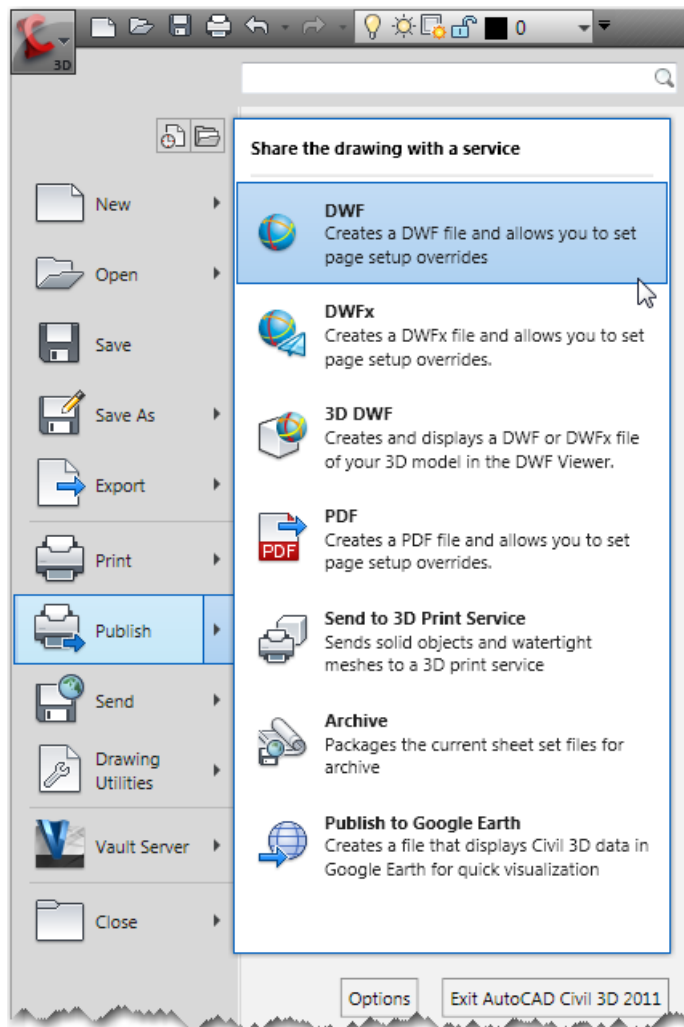
## Irrigation and Landscape Submittals

Irrigation and Landscape submittals are to be **Multi-Sheet** .DWF's. It is the responsibility of the submitting Engineer to combine DWF files into one document before submitting.

### Creating .DWF files

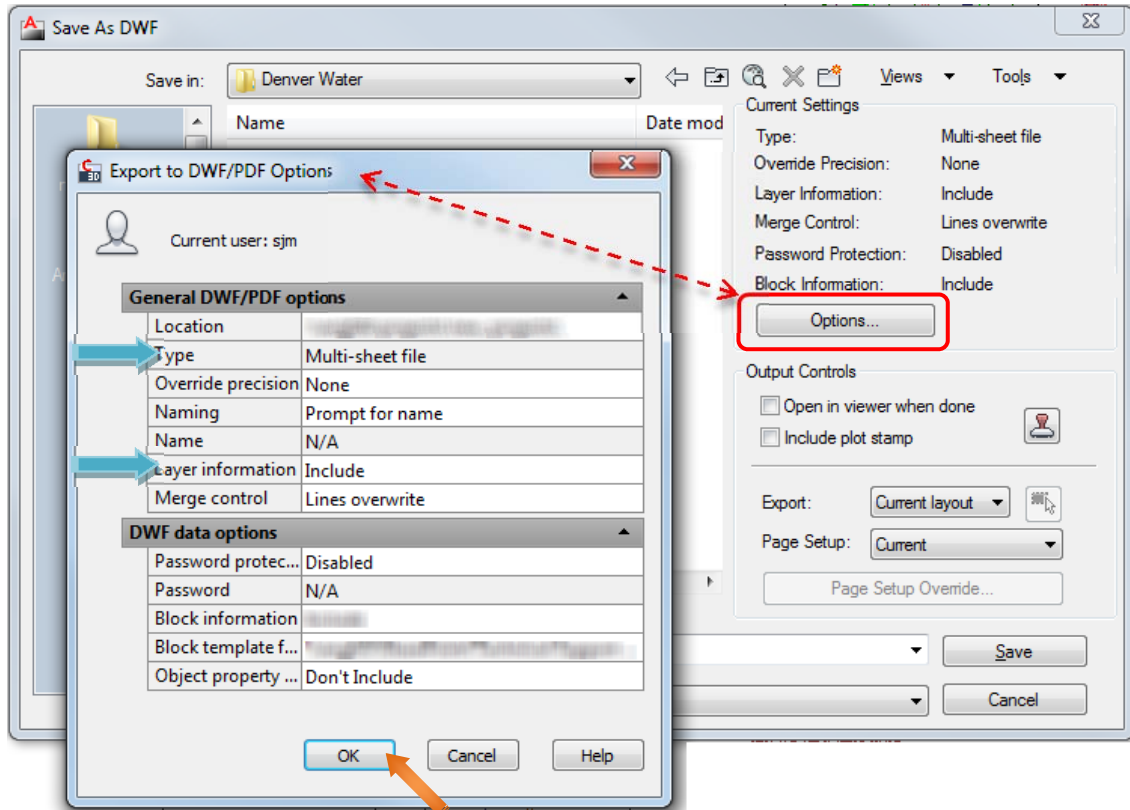
The .DWF files will be used for the Irrigation and Landscape Plan Review process. An electronic drawing set is the digital equivalent of a set of plotted drawings, the .DWF files and hardcopies must be identical, it is suggested to plot hard copies from the .DWF files.

To create a .DWF file click the *Application Menu*, in the top left corner of the AutoCAD® software, select *Publish* and choose *DWF* (alternately type **\_EXPORTDWF** at the command line):



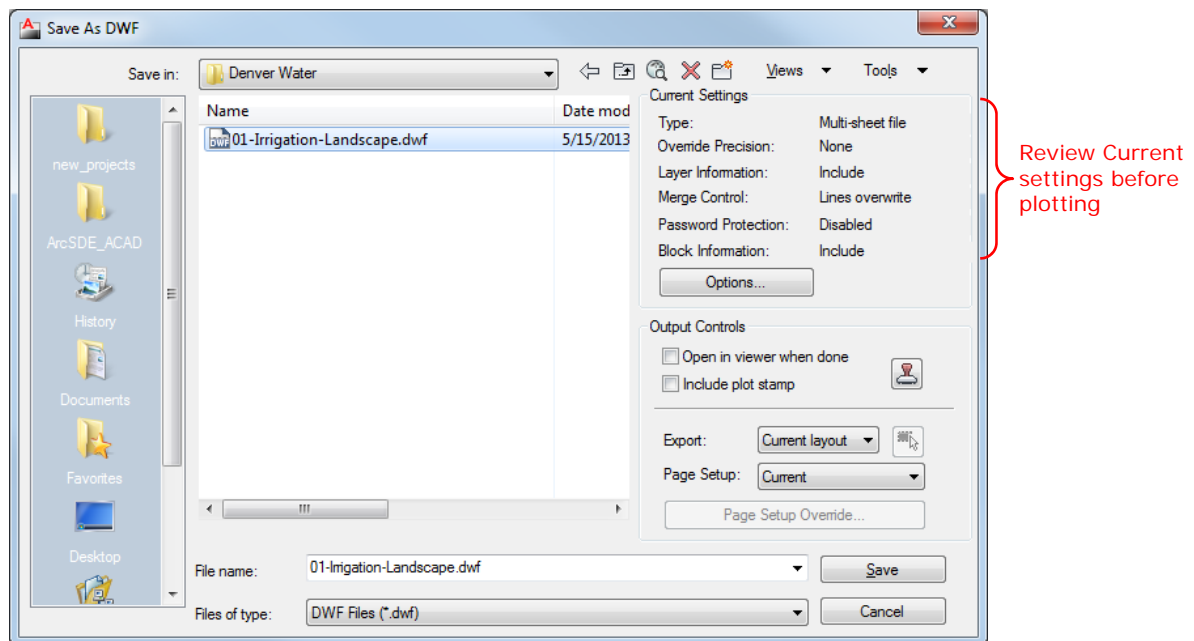
The Save As DWF dialog will appear, click the **Options...** button and change the following options, click **OK** when finished:

- Type: **Multi-sheet** file
- Layer information: Include



\*Note: if the "Type" will not change from Multi-sheet file, type **EXPORTSETTINGS** at the command line to adjust the options before proceeding.

Choose where to save the file and name appropriately:



## Quick Facts - Do's and Don'ts for .DWFs Irrigation and Landscape submittals

- All sheets in plan set included in .DWF file - Multi-sheets
- Do not use color DWF's – Grayscale (black & white) only
- When creating DWF's there is better response when created from Layout tabs (paper space) – *zoom extents in layout tab before Publishing*
- Do not save as a .DWFx file, use .DWF only
- Do not use hatching, solids, or wipeouts to mask text as these methods cause problems when publishing to DWF's
- DWF file names shall include Project Name
- Open DWF to QC before submitting

Color DWF's not acceptable

