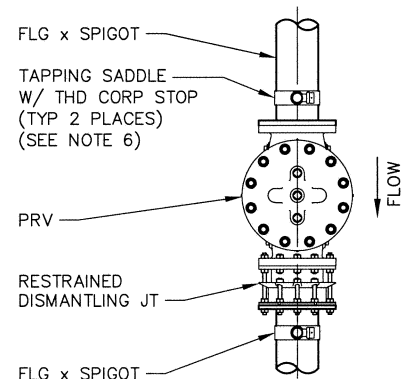


NOTES:

1. ADDITIONAL SPECIFICATIONS AND DETAILS ARE REQUIRED IN ACCORDANCE WITH THE DENVER WATER CAPITAL PROJECTS CONSTRUCTION STANDARD WHEN TELEMETRY, SUMP PUMP, OR ELECTRICAL EQUIPMENT IS REQUIRED INSIDE THE VAULT.
2. ACCESS STAIRS WITH A DOOR OUTSIDE OF THE PAVEMENT MAY BE REQUIRED ON STREETS WITH HEAVY TRAFFIC.
3. SEE SHEET 31 FOR TYPICAL SECTION.
4. DO NOT PLACE SUMP DIRECTLY UNDER A VAULT ACCESS OPENING.
5. WHEN INSTALLING AN 8-INCH OR SMALLER PRESSURE REGULATING VALVE ON A 20-INCH OR SMALLER MAIN, PIPING SHALL BE THE SAME SIZE AS THE PRESSURE REGULATING VALVE AND ONE PIPE SIZE SMALLER THAN THE MAIN. (LARGER SIZE CONDUIT AND PRESSURE REGULATING VALVES REQUIRE APPROVAL OF LINE SIZE).
6. FOR PIPE SIZES LESS THAN 12-INCHES, CORP STOPS SHALL BE 1-INCH. FOR PIPE SIZES 16 & 20-INCH, CORP STOPS SHALL BE 2-INCH.
7. IF SCADA IS REQUIRED VAULT SIZE SHALL BE 9- FEET BY 18- FEET.



**OPTIONAL RESTRAINED
DISMANTLING JOINT**

D DENVER WATER	
PRESSURE REGULATING VALVE VAULT INSTALLATION TYPICAL PLAN	
Scale: <u> NONE </u>	Date: <u> May 2018 </u>
Drawn: <u> RLB </u>	Ck: <u> K ROSS </u>
Approved: <u> Steph C. Ross </u>	Dr. <u> 127 </u> No. <u> 35 </u>