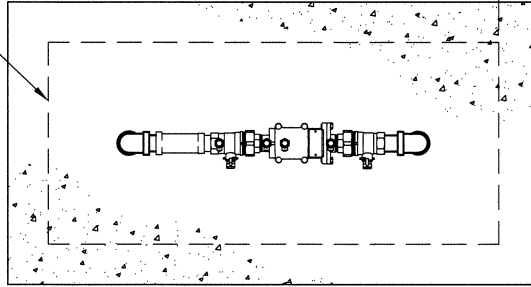


SPEC ENCLOSURE  
(HEATED/NON-HEATED)

6" CLR  
ALL SIDES



PLAN

USC FCCCHR APPD  
RP BFP ASSY

SEAL PIPE PENETRATIONS W/  
ELASTOMERIC SEALANT (TYP)

ALL EXPOSED CONC EDGES  
TO HAVE A 3/4" CHFR

4" CONC PAD  
W/ #4@12" EW -  
L AS REQD -  
30" MIN WIDTH -  
TOP OF SLAB TO BE  
1" ABOVE GROUND  
LINE

GROUND LINE

RELIEF VALVE

BRASS ELEC  
WTR PIPE GND  
CLAMP W/ #6  
AWG BARE CU

2" CURB STOP W/ SWV

5'-0" MIN  
TO METER PIT

FLOW

FLOW

TYPE "K" CU SERVICE LINE  
FROM METER

1 1/2 CU FT  
3/4" CRUSHED ROCK (TYP)

ELEVATION

NOTES:

1. CONCRETE PAD PENETRATIONS SHALL BE 1-INCH LARGER THAN PIPE DIAMETER.
2. DIAMETER OF FITTINGS, NIPPLE, AND TUBING SHALL BE EQUAL IN DIAMETER TO THE BACKFLOW PREVENTER.
3. HEATED ENCLOSURE SHALL HAVE SEPARATE APPROVED ELECTRICAL SERVICE AND SHALL BE SIZED TO ALLOW ADEQUATE ROOM FOR TESTING AND MAINTENANCE.
4. REFER TO LOCAL CODES AND MANUFACTURER REQUIREMENTS FOR INSTALLATION INSTRUCTIONS.



OUTSIDE SETTING FOR 2" & SMALLER REDUCED PRESSURE PRINCIPLE ASSEMBLY IN ENCLOSURE

Scale:   NONE   Date:   May 2018  

Drawn:   RLB   Ck:   K ROSS  

Approved:   Steph C. Ren   Dr.   127   No.   35