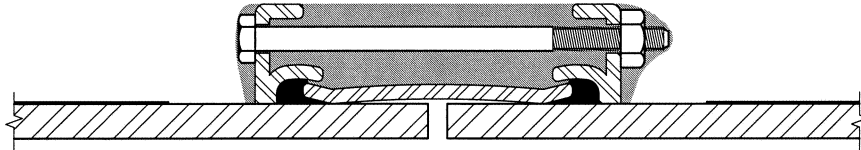


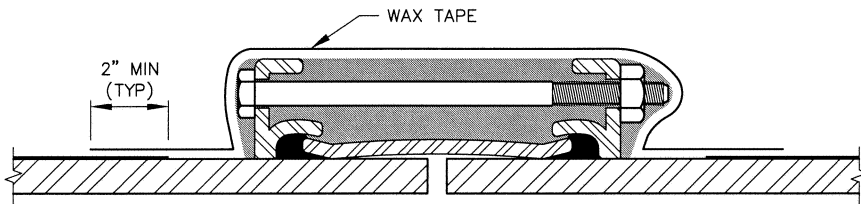
STEP-1

CLEAN TO REMOVE ALL FOREIGN MATTER AND EXCESS MOISTURE. ACHIEVE SSPC-SP2. APPLY 3 MILS OF PRIMER TO UNCOATED PIPE, COUPLING SURFACES, AND PIPE COATING WHERE WAX TAPE AND WRAP WILL LAP.



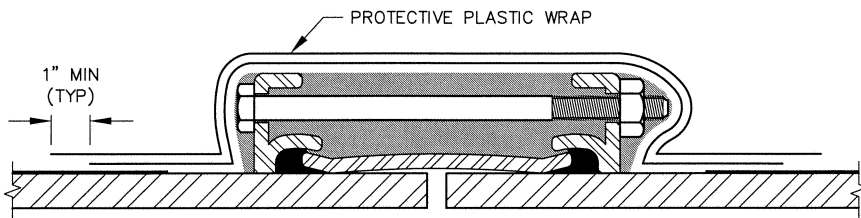
STEP-2

APPLY FILL MASTIC IN SHADED AREA TO PROVIDE A UNIFORM SURFACE TO WHICH WAX TAPE CAN BE APPLIED WITHOUT BRIDGING OR VOIDS.



STEP-3

CIRCUMFERENTIALLY INSTALL WAX TAPE AROUND PIPE AND COUPLING TO PROVIDE A MINIMUM THICKNESS OF 70 MILS. OVERLAPS SHALL BE 1-INCH MINIMUM. OVERLAP ON PIPE COATING SHALL BE 2-INCH MINIMUM.



STEP-4

CIRCUMFERENTIALLY INSTALL PROTECTIVE PLASTIC WRAP 1.5 MILS MINIMUM THICKNESS OVER WAX TAPE. OVERLAPS SHALL BE 1-INCH MINIMUM.

NOTE:

NON-INSULATED BOLTED SLEEVE TYPE COUPLING CONNECTION SHOWN. DETAIL APPLIES TO ANY BURIED BOLTED SLEEVE TYPE COUPLING CONNECTION.



FIELD INSTALLATION WAX TAPE (BOLTED STEEL SLEEVE TYPE COUPLING CONNECTION)

Scale: <u> NONE </u>	Date: <u> May 2018 </u>
Drawn: <u> RLB </u>	Ck: <u> K ROSS </u>
Approved: <u> Steph C. Rom </u>	Dr. <u> 127 </u> No. <u> 35 </u>