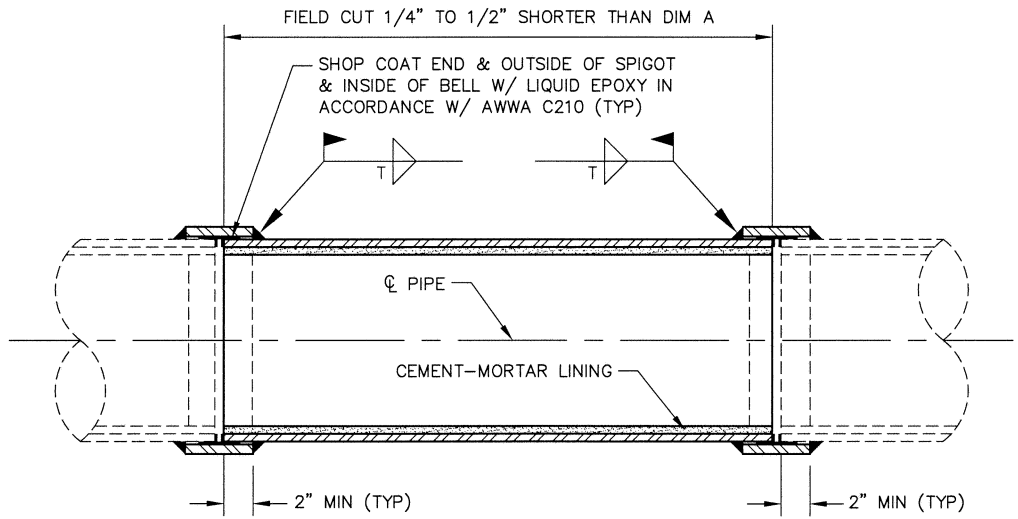


OPEN POSITION



CLOSED POSITION

NOTE:

AFTER INSTALLATION, CLOSURE ASSEMBLY SHALL BE FIELD COATED WITH SAME COATING AS MAIN PIPELINE.

D DENVER WATER	
STEEL PIPE-CLOSURE 20" & SMALLER	
Scale: <u> NONE </u>	Date: <u> May 2018 </u>
Drawn: <u> RLB </u>	Ck: <u> K ROSS </u>
Approved: <u> Steph C. Ren </u>	Dr. <u> 127 </u> No. <u> 35 </u>